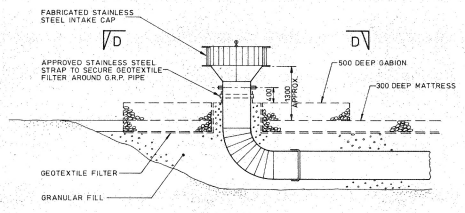
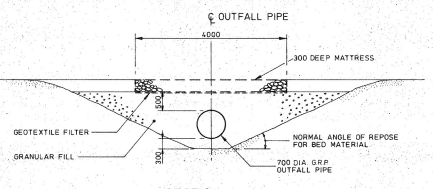


LONGITUDINAL SECTION
Scale 1:250

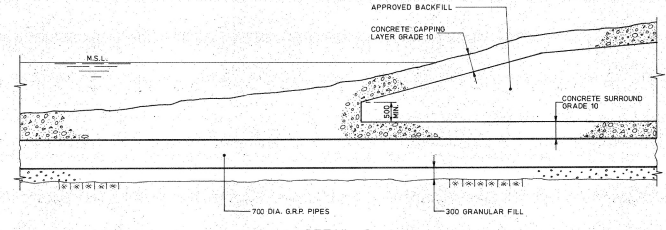
FOR DETAILS OF PUMPHOUSE SEE DHD. No.8626/702



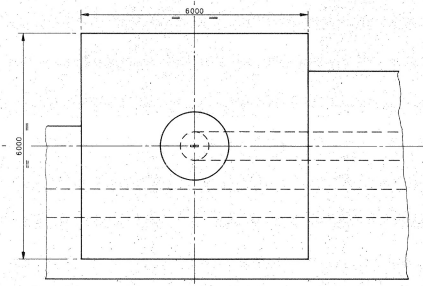
DETAIL 1
(OUTFALL OMITTED FOR CLARITY)
Scale 1:50



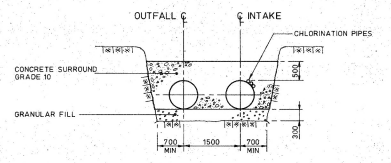
SECTION A-A
Scale 1:50



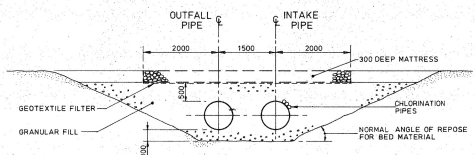
DETAIL 2
Scale 1:50



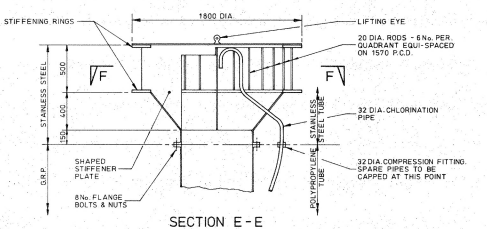
PLAN ON D-D
Scale 1:50



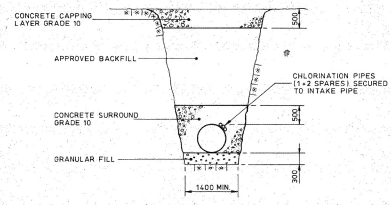
SECTION C-C
Scale 1:50



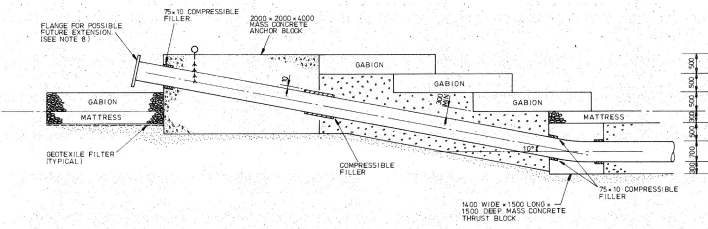
SECTION B-B
Scale 1:50



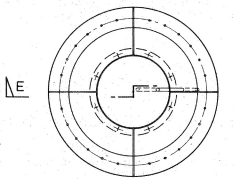
SECTION E-E
Scale 1:20



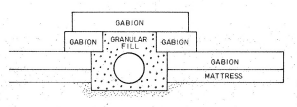
SECTION G-G
FOR INTAKE PIPE
(OUTFALL PIPE SIMILAR BUT
WITHOUT CHLORINATION PIPES)
Scale 1:50



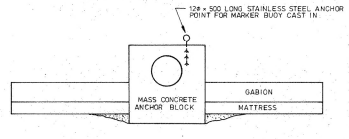
DETAIL 3
Scale 1:50



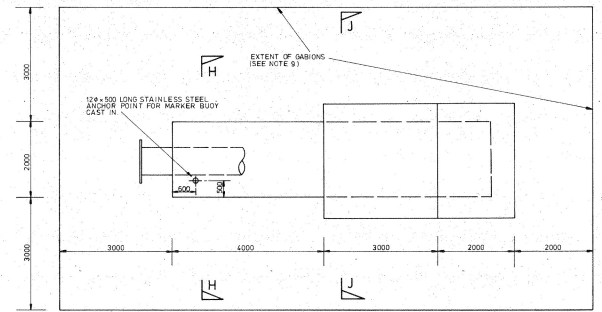
SECTION F-F
INTAKE CAP DETAIL
Scale 1:20



SECTION J-J
Scale 1:50



SECTION H-H
Scale 1:50



PLAN ON DETAIL 3
Scale 1:50

NOTES

- G.R.P. PIPEWORK SHALL BE GLASS REINFORCED PIPEWORK SUITABLE FOR CARRYING SEA WATER AT 600 AS ARMARLO G.R.P. PIPEWORK BY JOHNSTON PIPES LTD., COLELEY Telford, SHROPSHIRE TF4 3BX ENGLAND, OR EQUAL APPROVED. STIFFNESS 1000 N/m² MIN. WALL THICKNESS 13mm
- PIPE JOINTS SHALL BE MANUFACTURED FROM G.R.P. AND SHALL INCORPORATE A RUBBER SEALING PROFILE.
- BENOS AND FITTINGS SHALL MANUFACTURED TO AT LEAST THE SAME SPECIFICATION AS THE STRAIGHT PIPE
- INTAKE CAP SHALL BE FABRICATED FROM STAINLESS STEEL TO B.S.970 GRADE 316 S31 WITH A MINIMUM PLATE THICKNESS OF 6mm.
- GABION BOXES AND MATTRESS UNITS SHALL BE FORMED FROM GALVANISED HEXAGONAL MESH STEEL WIRE MESH WITH ADDITIONAL P.V.C. SHEATHING AND SHALL INCORPORATE PARTITION PANELS (DIAPHRAGMS) AT CENTRES NOT EXCEEDING 1METRE. AS MACHFERRI GABIONS AND MEND MATTRESS SUPPLIED BY RIVER AND SEA GABIONS LONDON LTD., 2 SHILLON PLACE, LONDON W1R 8SD ENGLAND
- GEOTEXTILE FILTER SHALL BE "TERRAM" 700 PLUS W777 MANUFACTURED BY EXXON CHEMICAL GEOPOLYMERS LTD., MANHILL PARK, PONTYPOOL, GWENT NP4 0TR WALES, IN ACCORDANCE WITH SPECIFICATION CLAUSE 17.39.
- CONCRETE PLACED UNDERWATER SHALL BE POLYMER MODIFIED NON-DISPERIBLE CONCRETE INCORPORATING ANOMEX LW9 UNDERWATER CONCRETING ADMIXTURE AS MANUFACTURED BY ANOMEX LTD., ATLAS WORKS, CULLUM ROAD, BURY ST EDWARDS, SUFFOLK IP38 3PB ENGLAND, OR EQUAL APPROVED.
- OUTFALL PIPEWORK TO BE TERMINATED WITH A SUITABLE BOLTED FLANGE CONNECTION TO PERMIT THE FUTURE ADDITION OF A MIXING NOZZLE IF REQUIRED.
- GEOTEXTILE FILTER TO BE INSTALLED UNDER FULL EXTENT OF GABIONS AT OUTFALL.

WORKING DRAWING

PROJECT ENGINEER
PROJECT ENGINEER
DATE
JAN 1992
DRAWING NUMBER
8626 / 702
DATE
21.7.92
CHECKED
T.G.J.F.
APPROVED
L.E.E.
REVISION
A

Rev	Description	Date	Checked
A	OUTLET BE USED DETAIL 3 ABOVE	21.7.92	

GOVERNMENT OF BERMUDA
TYNES BAY
WASTE TREATMENT FACILITY

Title
COOLING WATER SYSTEM
INTAKE PIPEWORK DETAILS

MINISTRY OF WORKS & ENGINEERING
IN ASSOCIATION WITH
S. MAUNSELL & PARTNERS
CONSULTING ENGINEERS
LONDON

KENNEDY & DOWNEN
CONSULTING ENGINEERS
MANCHESTER