



GOVERNMENT OF BERMUDA

Ministry of Public Works

Department of Works and Engineering

January 20, 2025

Dear Proponents,

Ref: 61-01-150-01 Floating Docks Surveying and Replacement Design

This Addendum #3 contains (7) pages including this front page.

PART 1 Scope Clarification and Changes – 2 pages

PART 2 Site Photos – 4 pages

The following addendum supersedes information contained in the RFQ to the extent referenced.

This addendum forms part of the RFP documents and will be subject to all of the conditions set out in the contract.

PART 1 Scope Clarification and Changes

1. Floating barges: the condition assessment does not include the floating barges, barge connectors, or boat loader units. It is known that they are in poor condition and hence the objective of this procurement is to replace them.
2. Fenders: It has been recently found out that the majority of the fenders are damaged, so a condition assessment of the fenders won't be necessary. New fenders will be required.
3. Hamilton Ferry Terminal Loading Area 3: The barge system identified as Loading Area 3 in the attached marked up sheet number: 13/26/02/HT is not present at the moment (including piles); therefore, surveying of this area is excluded from the scope of the project. Design of Loading Area 3 of floating docks is included in the scope.

END OF PART 1

Structures Section

BCE Bourne Consulting Engin
184 West Central Street
Franklin, MA 01863
TEL: (508) 628-4150 FAX: (508) 628-9077

GENERAL NOTES:

- COORDINATES BASED ON BNG 2000.
- ALL ELEVATIONS ARE IN METERS BASED ON ORDNANCE DATUM.
- ALL DISTANCES ARE IN METERS.
- SURVEY CONTROL SHALL BE PROVIDED TO THE CONTRACTOR BY THE OWNER.

ISSUED FOR CONSTRUCTION 14/08/01

AMENDMENTS:

NO:	REVISION	APP	DATE:
1	BARGES & T	RRB	04/01/02

SCALE: 1 : 100

SURVEY

PREPARED BY: DATE:

DESIGN

PREPARED BY: BAP DATE: 23/05/01

CHECKED BY: RRB DATE: 23/05/01

DRAWING

PREPARED BY: JSK DATE: 23/05/01

CHECKED BY: BAP DATE: 23/05/01

APPROVED BY: RRB

PROJECT NUMBER:

61/01/01

PROJECT NAME:

HAMILTON TERMINAL
REPLACEMENT FERRY PROJECT
PHASE 1
DOCK CONSTRUCTION

#1 POINT PLEASANT ROAD
PEMBROKE PARISH

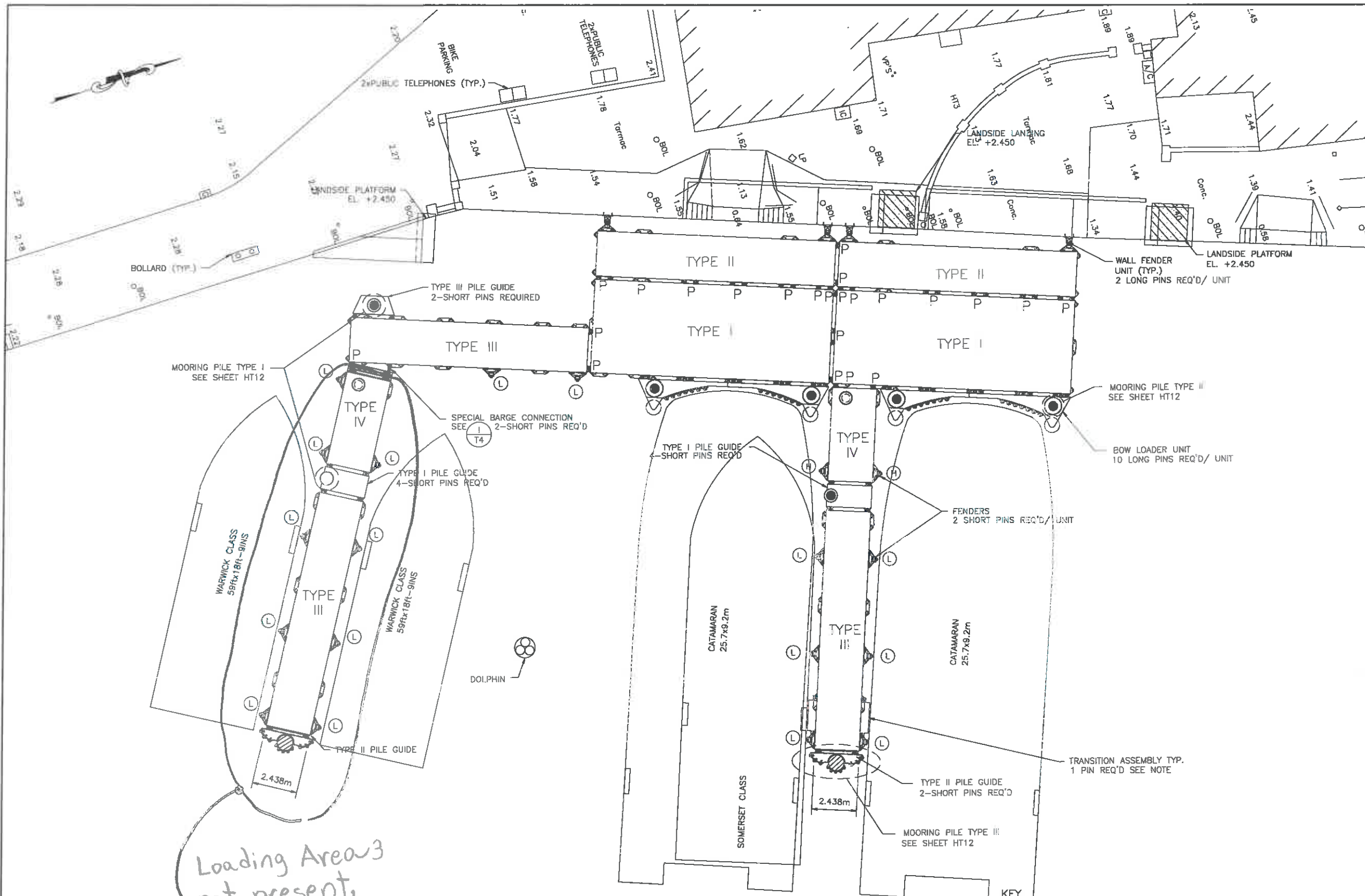
DRAWING FILE NO: ACAD R-14
HT-3_Barge-assembly.dwg

SHEET TITLE:

BARGE ASSEMBLY
PLAN

SHEET NUMBER: REVISION

13/26/02/HT3



Handwritten note: Loading Area 3 not present, therefore scope includes design, but not surveying of this portion of the docks

BARGE LAYOUT

CONSTRUCTION

Reference Drawings

- (L) LOW FENDER - SEE SHEET T4.
- (H) HIGH FENDER - SEE SHEET T4.
- P-BARGE TO BARGE PIN REQUIRED

- NOTE:
- SEE SHEETS T3 FOR BARGE UNITS.
 - SEE SHEETS T4 FOR PILE GUIDE UNITS.
 - TRANSITION ASSEMBLY TO USE COMMON P.N.W./ BARGE FENDER



PART 2 Site Photos

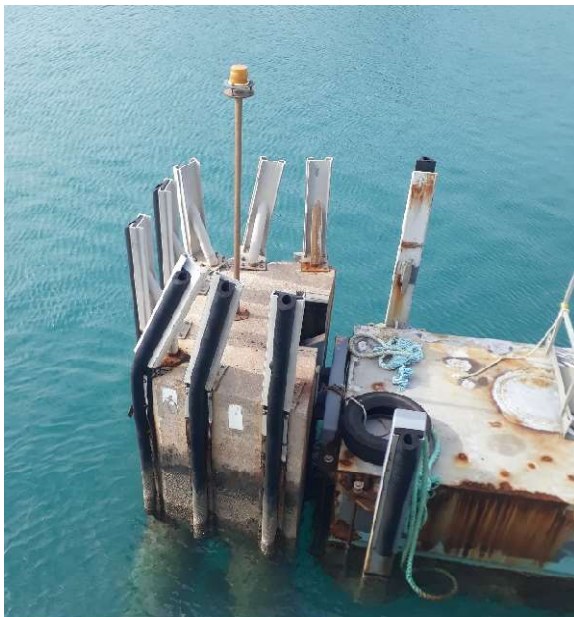
Hamilton Ferry Terminal



Dockyard Ferry Terminal



Damaged Pier at Dockyard



Ferry Depot





END OF PART 2