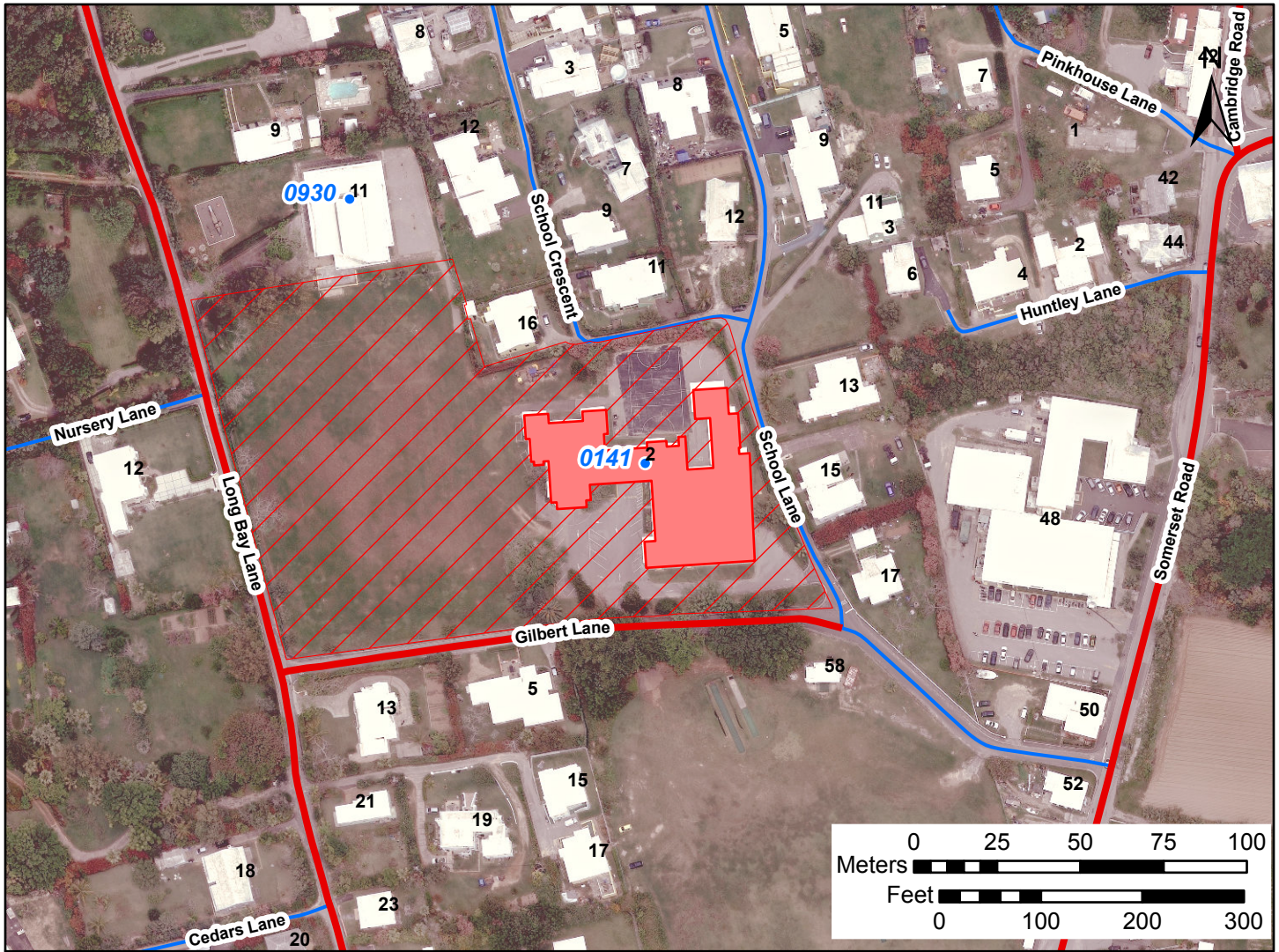




# SITE PLAN



## Somerset Primary

Estates Reference #: **S0009**

Address: 2 Gilbert Lane, Sandys, MA 03

School Type: **Primary School**

### Areas

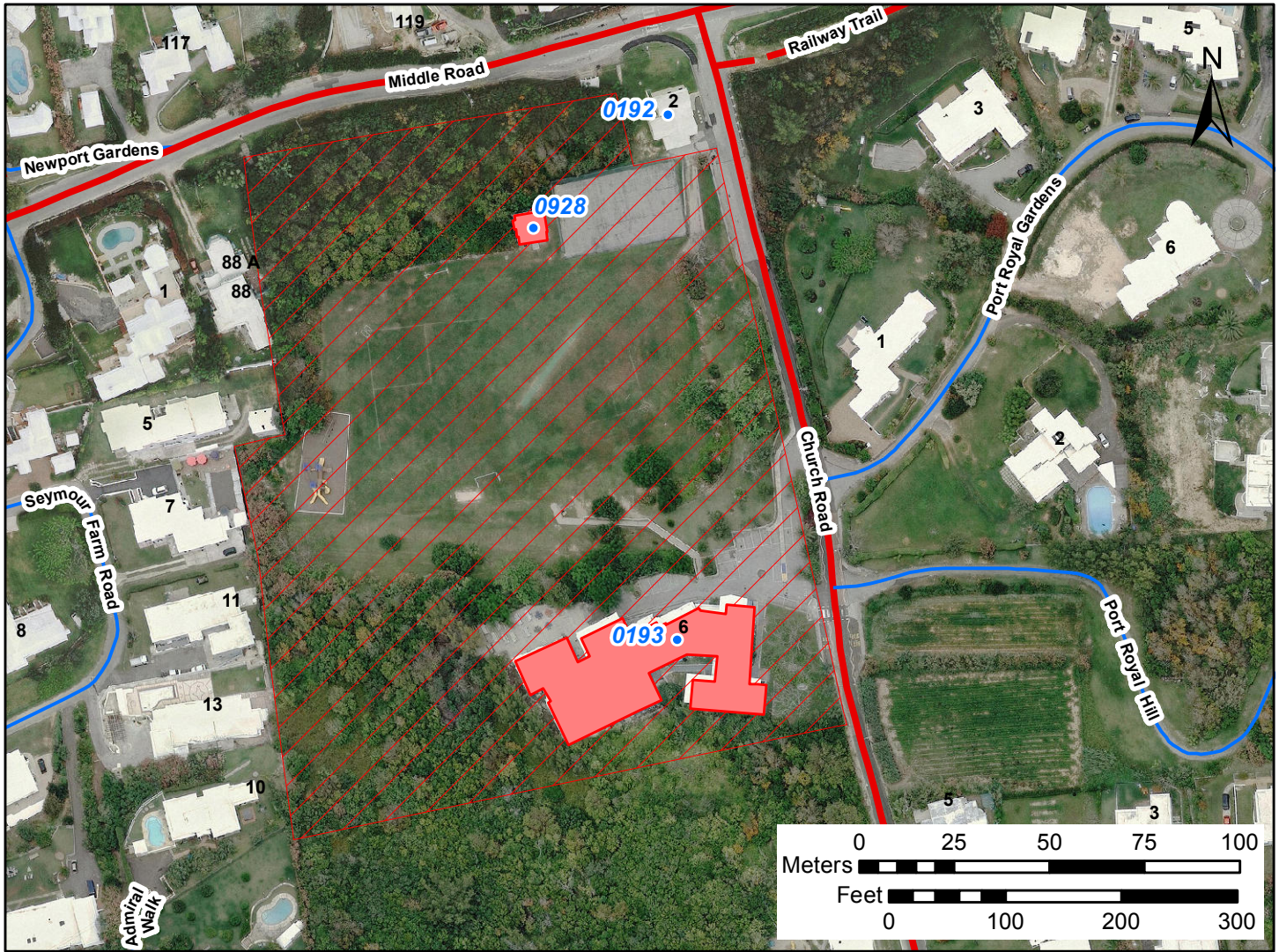
Total Building Footprint: 1,850sq.m  
 19,908sq.ft  
 Approximate Land Area: 1.559ha.  
 3.853ac.

### Legend

- Government Maintained Schools
- Land Occupied by Government School
- Private Estate
- Public Highway



# SITE PLAN



## Port Royal Primary School

Estates Reference #: **S0063**

Address: 6 Church Road, Southampton, SN 01

School Type: **Primary School**

### Areas

Total Building Footprint: 1,306 sq.m  
 14,059 sq.ft

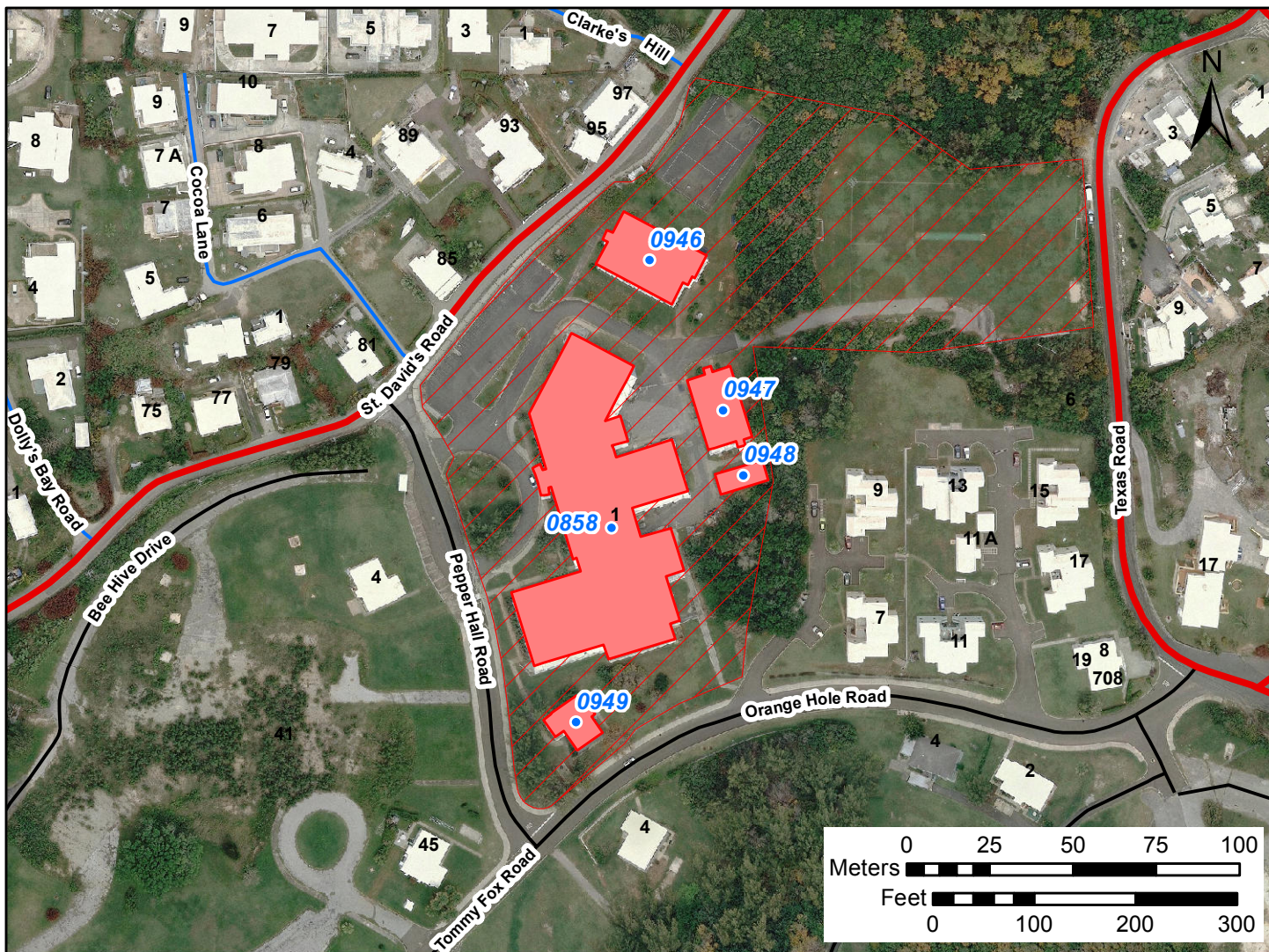
Approximate Land Area: 2.356 ha.  
 5.823 ac.

### Legend

- |                                    |                      |                            |
|------------------------------------|----------------------|----------------------------|
| Government Maintained Schools      | Corp. of Hamilton    | Public Highway             |
| Land Occupied by Government School | Private (Government) | Public (Corp. St. Georges) |
| un-named                           | Private Island       | Railway Trail              |
| Corp. St. Georges                  | Private Estate       | WEDCo                      |
|                                    |                      | BLDC                       |



# SITE PLAN



## Clearwater Middle School [BLDC]

Estates Reference #: **S0127**

Address: 2 St David's Road, Southside, St David's,

School Type: **Middle School**

### Areas

Total Building Footprint: 4,095 sq.m  
 44,081 sq.ft

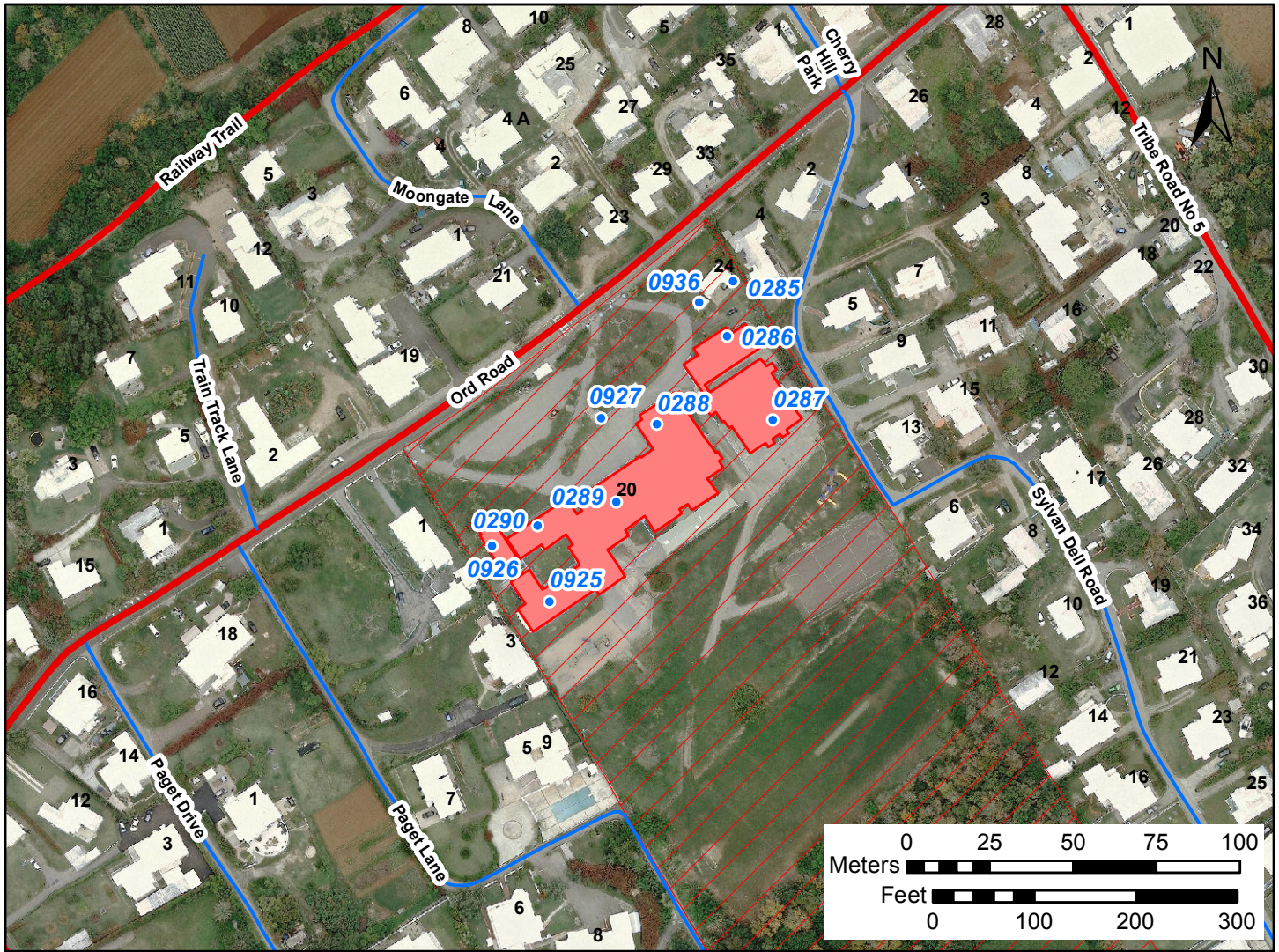
Approximate Land Area: 2.080 ha.  
 5.139 ac.

### Legend

- |                                    |                      |                            |
|------------------------------------|----------------------|----------------------------|
| Government Maintained Schools      | Corp. of Hamilton    | Public Highway             |
| Land Occupied by Government School | Private (Government) | Public (Corp. St. Georges) |
| un-named                           | Private Island       | Railway Trail              |
| Corp. St. Georges                  | Private Estate       | WEDCo                      |
|                                    |                      | BLDC                       |



# SITE PLAN



## Paget Primary School

Estates Reference #: **S0228**

Address: 20 Ord Road, Paget,

School Type: **Primary School**

### Areas

Total Building Footprint: 2,346 sq.m  
 25,250 sq.ft

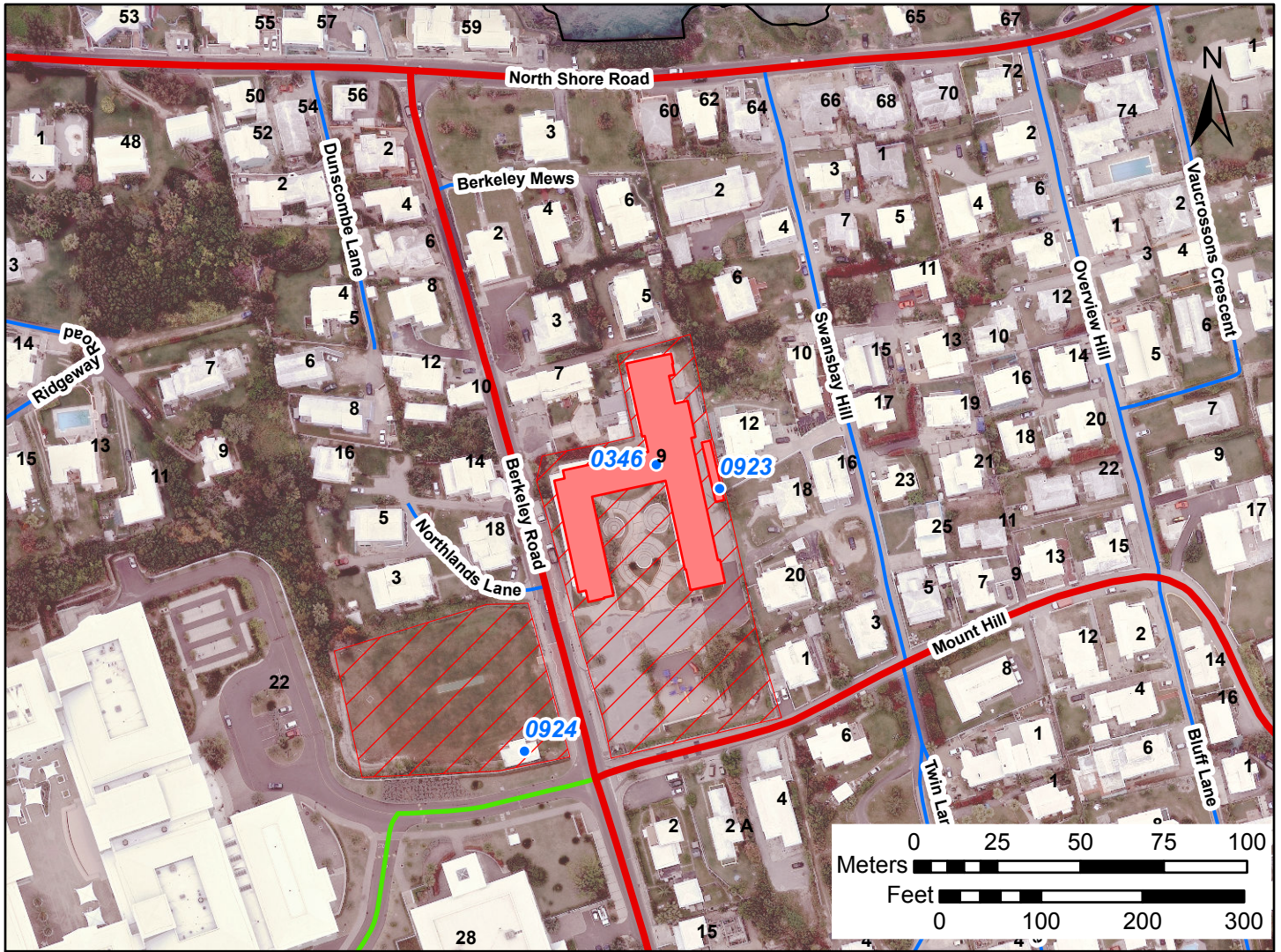
Approximate Land Area: 3.100 ha.  
 7.660 ac.

### Legend

- |                                    |                      |                            |
|------------------------------------|----------------------|----------------------------|
| Government Maintained Schools      | Corp. of Hamilton    | Public Highway             |
| Land Occupied by Government School | Private (Government) | Public (Corp. St. Georges) |
| un-named                           | Private Island       | Railway Trail              |
| Corp. St. Georges                  | Private Estate       | WEDCo                      |
|                                    |                      | BLDC                       |



# SITE PLAN



## Northlands Primary School

Estates Reference #: **S0345**

Address: 9 Berkeley Road, Pembroke, HM 13

School Type: **Primary School**

### Areas

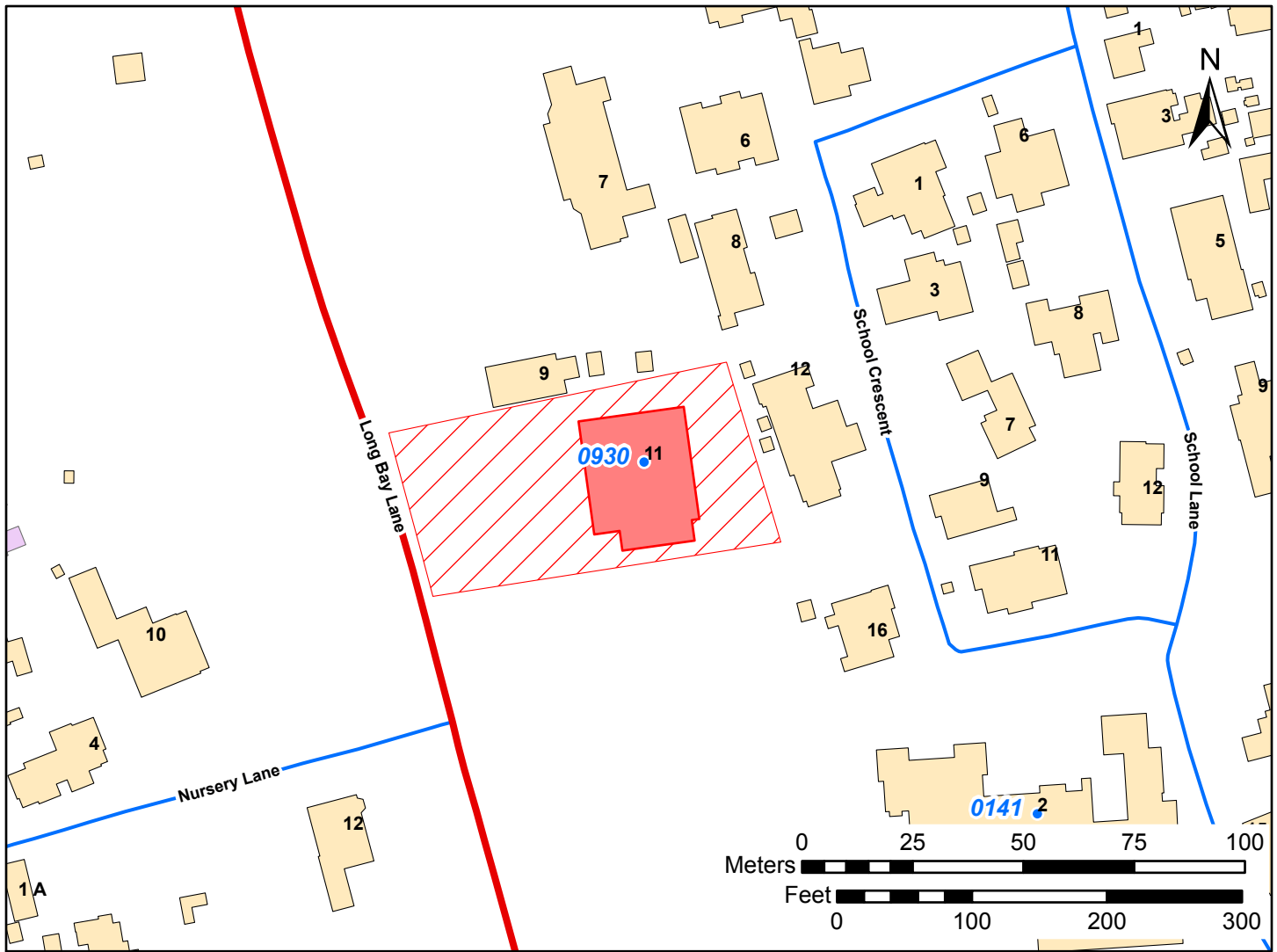
Total Building Footprint: 1,476sq.m  
 15,887sq.ft  
 Approximate Land Area: 0.825ha.  
 2.038ac.

### Legend

- Government Maintained Schools
- Land Occupied by Government School
- Private (Government)
- Private Estate
- Public Highway



# SITE PLAN



## Lagoon Park Pre School

Estates Reference #: **S0469**

Address: 11 Long Bay Lane, Sandys, MA03

School Type: **Pre School**

### Areas

|                           |                       |
|---------------------------|-----------------------|
| Total Building Footprint: | 692sq.m<br>2,269sq.ft |
| Approximate Land Area:    | 0.316ha.<br>0.780ac.  |

### Legend

- Private Estate
- Public Highway
- Building
- Building Footprint