



GOVERNMENT OF BERMUDA  
Ministry of Home Affairs  
**Registry General**

# ANNUAL REPORT

FOR THE YEAR ENDED 31 DECEMBER 2016

*Births, Marriages and Deaths*





GOVERNMENT OF BERMUDA  
Ministry of Home Affairs  

---

**Registry General**

---

# ANNUAL REPORT

FOR THE YEAR ENDED 31 DECEMBER 2016

*Births, Marriages and Deaths*

---

# CONTENTS

SCHEDULE OF TABLES AND FIGURES .....	iii
COMMENTS FROM THE REGISTRAR GENERAL .....	iv
GENERAL INFORMATION.....	1
<b>Births</b> .....	1
<b>Deaths</b> .....	1
<b>Marriages</b> .....	1
POPULATION .....	3
<b>Resident Population</b> .....	3
BIRTHS .....	4
<b>Distribution of Live Births by Sex and Natal Status – 2012 to 2016</b> .....	4
<b>Distribution of Live Births by Parish</b> .....	4
<b>Multiple Births</b> .....	5
<b>Distribution of Live Births by Age of Mother</b> .....	6
<b>Distribution of Live Births by Nationality</b> .....	8
<b>Additional Vital Events</b> .....	8
MARRIAGES .....	10
<b>Statistics Relating to Marriages – 2012 to 2016</b> .....	10
<b>Distribution of Marriages by Religion/Denomination</b> .....	11
<b>Marriage Venues</b> .....	11
<b>Persons Marrying by Age Group of Partners</b> .....	12
<b>Distribution of Marriages by Residential Status of Partners</b> .....	13
<b>Maritime Marriages</b> .....	13
DEATHS .....	14
<b>Death Statistics Including Stillbirths – 2012 to 2016</b> .....	14
<b>Distribution of Deaths by Age and Sex – 2012 to 2016</b> .....	15
<b>Distribution of Deaths by Age and Sex – 2016</b> .....	16
<b>Distribution of Deaths by Age and Parish of Residence of the Deceased</b> .....	17
<b>Infant Mortality Rates</b> .....	18
<b>Deaths of Non-Residents – 2016</b> .....	18
<b>Coroners' Cases</b> .....	19
APPENDIX .....	20
<b>Table A – Births, Marriages, Deaths and Population Estimates – 2012 to 2016</b> .....	19
<b>Figure A – Births, Marriages and Deaths – 2012 to 2016</b> .....	20

# SCHEDULE OF TABLES AND FIGURES

<b>Table 1.0</b>	<b>Summary Statistics</b> .....	2
<b>Figure 1.0</b>	<b>Population Estimates – 2012 to 2016</b> .....	3
<b>Table 2.0</b>	<b>Distribution of Live Births by Sex and Natal Status – 2012 to 2016</b> .....	4
<b>Table 2.1</b>	<b>Distribution of Live Births by Sex, Natal Status and Parish – 2016</b> .....	5
<b>Table 2.2</b>	<b>Distribution of Multiple Births by Sex – 2012 to 2016</b> .....	5
<b>Figure 2.0</b>	<b>Distribution of Live Births by Age of Mother and Natal Status – 2016</b> .....	6
<b>Table 2.3</b>	<b>Distribution of Live Births by Age of Mother of Children Born In Wedlock – 2012 to 2016</b> .....	7
<b>Table 2.3</b>	<b>Distribution of Live Births by Age of Mother of Children Born Out of Wedlock – 2012 to 2016</b> .....	7
<b>Table 2.3</b>	<b>Distribution of All Live Births by Age of Mother – 2012 to 2016</b> .....	7
<b>Table 2.4</b>	<b>Distribution of Live Births by Nationality</b> .....	9
<b>Table 3.0</b>	<b>Distribution of Marriages by Type of Ceremony – 2012 to 2016</b> .....	10
<b>Table 3.1</b>	<b>Distribution of Marriages by Religion/Denomination – 2012 to 2016</b> .....	11
<b>Table 3.2</b>	<b>Distribution of Marriages by Parish and Venue – 2016</b> .....	12
<b>Table 3.3</b>	<b>Distribution of Persons Marrying by Sex and Age Group of Partners – 2016 and 2015</b> .....	12
<b>Table 3.4</b>	<b>Distribution of Marriages by Residential Status – 2012 to 2016</b> .....	13
<b>Table 4.0</b>	<b>Distribution of Deaths by Sex and Stillbirths – 2012 to 2016</b> .....	14
<b>Table 4.1</b>	<b>Distribution of Deaths by Age and Sex – 2012 to 2016</b> .....	15
<b>Table 4.2</b>	<b>Distribution of Deaths by Age and Sex – 2016</b> .....	16
<b>Table 4.3</b>	<b>Distribution of Deaths by Age and Parish of Residence of the Deceased – 2016</b> .....	17
<b>Table 4.4</b>	<b>Infant Mortality – 2016</b> .....	18
<b>Table 4.5</b>	<b>Deaths of Non-Residents – 2012 to 2016</b> .....	19
<b>Table A</b>	<b>Births, Marriages, Deaths and Population Estimates – 2012 to 2016</b> .....	20
<b>Figure A</b>	<b>Births, Marriages and Deaths – 2012 to 2016</b> .....	20

# COMMENTS FROM THE REGISTRAR GENERAL



I have the pleasure of presenting the Annual Report for the year ended December 31, 2016 which has been diligently prepared in accordance with Section 19 of the Registration (Births and Deaths) Act 1949. In full recognition of the role of the Registrar General in the compilation of vital statistical information and the important role that it plays in planning for the provision of services in areas such as education, health and tourism to name a few, I have taken the necessary steps to ensure that the highest quality is maintained in the recording, collating and presenting of the data to be included in the Annual Report.

This Annual Report is concerned and focuses principally on vital statistics in respect of the resident population of Bermuda. The Annual Report seeks to provide an illustrative statistical digest of vital events such as live births, deaths, foetal deaths (stillbirths), marriages, adoptions and re-registrations of births.

In the preparation of this report, I have relied on information received from the Records Office of the King Edward VII Memorial Hospital relating to births; from the local funeral directors and medical practitioners in relation to deaths and from local marriage officers and Masters of Bermuda registered ships in relation to local and maritime marriages respectively. The occurrence of sudden deaths is reported to the Registrar General by the Coroners' Office and Officers of the Magistrates' Court are responsible for informing the Registrar General of adoptions that take place on the Island.

The population estimates for the year ended December 31, 2016 are based on the 2010 Census figures. The excess number of live births over deaths for each year since then has been added to the base figures to compute the population statistics. No consideration has been given to the effect of emigration or immigration on the population.

I am grateful and acknowledge the expertise and commitments demonstrated by my staff in the provision of vital registration services to local and overseas residents in 2016 and hereby submit my Annual Report for the year ended December 31, 2016.

Aubrey Pennyman  
**Registrar General**

# GENERAL INFORMATION

## Births

The Registrar General is notified by the King Edward VII Memorial Hospital Medical Records Department of the births of children born there on a weekly basis. When a child is born at a location other than the hospital, notification is made by the person or persons who attended the birth.

For the year ended 31st December, 2016 the total number of live births recorded in respect of residents was 591; an increase of 8 or 1.4% from the 583 births recorded in 2015.

The live birth rate of the population increased by 2 points per thousand from 8.9 points recorded in 2015 to 9.1 points in 2016.

The number of births that occurred out of wedlock in 2016 decreased by 6.0% from the number of out of wedlock births for the previous year. The out of wedlock distribution of births occurring during the five-year period 2012 to 2016 ranged from a high of 45.6% in 2015 to a low of 38.9% in 2014.

## Deaths

The Registrar General receives notices of deaths occurring on the Island and within Bermuda's territorial waters from local funeral directors. The notices of deaths are sent to the Registrar General by the Coroners' Office in cases where inquests have been held into the causes of deaths.

A total of 503 deaths were recorded for the year ended 31st December, 2016. This figure consists of 492 deaths of residents and 11 deaths of non-residents. The number of stillbirths recorded for 2016 was 1.

A death rate of 7.5 per thousand of the population for 2016 reflects an increase from 7.0 recorded in 2015.

## Marriages

The Registrar General received information pertaining to marriages celebrated on the Island from local marriage officers. Information in respect of marriages that take place on the high seas aboard Bermuda registered ships is provided by the Masters of these ships.

There were 450 marriages performed in Bermuda for the year ended 31st December, 2016, a 11.6% decrease from the 509 marriages recorded in 2015. Out of the 450 marriages, 231 or 51.3% of the marriages took place between parties who were both non-residents; 177 or 39.3% of the marriages between parties who were both residents and 42 or 9.3% of the marriages between a resident party and a non-resident party. There was a 17.2% decrease in maritime marriages recorded in 2016 when comparing 468 marriages to 565 maritime marriages recorded in 2015.

Table 1.0 contains a summary of the statistics of births, deaths and population estimates as of 31st December, 2016.

**Table 1.0**  
**Summary Statistics**

	Male	Female	Total	
Population Estimates <sup>1</sup> at 31st December, 2015	31,283	34,009	65,292	
<b>Live Births During 2016</b>				<b>Live Births</b> 9.1 per 1,000 of the population
In Wedlock	168	173	341	
Out of Wedlock	135	115	250	
<b>Total</b>	<b>303</b>	<b>288</b>	<b>591</b>	
Deaths During 2016 <sup>2,3</sup>	266	226	492	<b>Deaths</b> 7.5 per 1,000 of the population
<b>Natural Increase in Population</b>				
Excess of Births over Deaths	37	62	99	
Population Estimates <sup>1</sup> at 31 December 2016	31,320	34,071	65,391	

<sup>1</sup> Population estimates are based on 2010 census figures and subsequent natural increases from 21 May 2010.

<sup>2</sup> Excludes one stillbirth

<sup>3</sup> Excludes non-resident deaths



In 2016 the total number of live births were 591 which reflects a slight increase of 8 or 1.4% over the previous year.



# POPULATION

## Resident Population

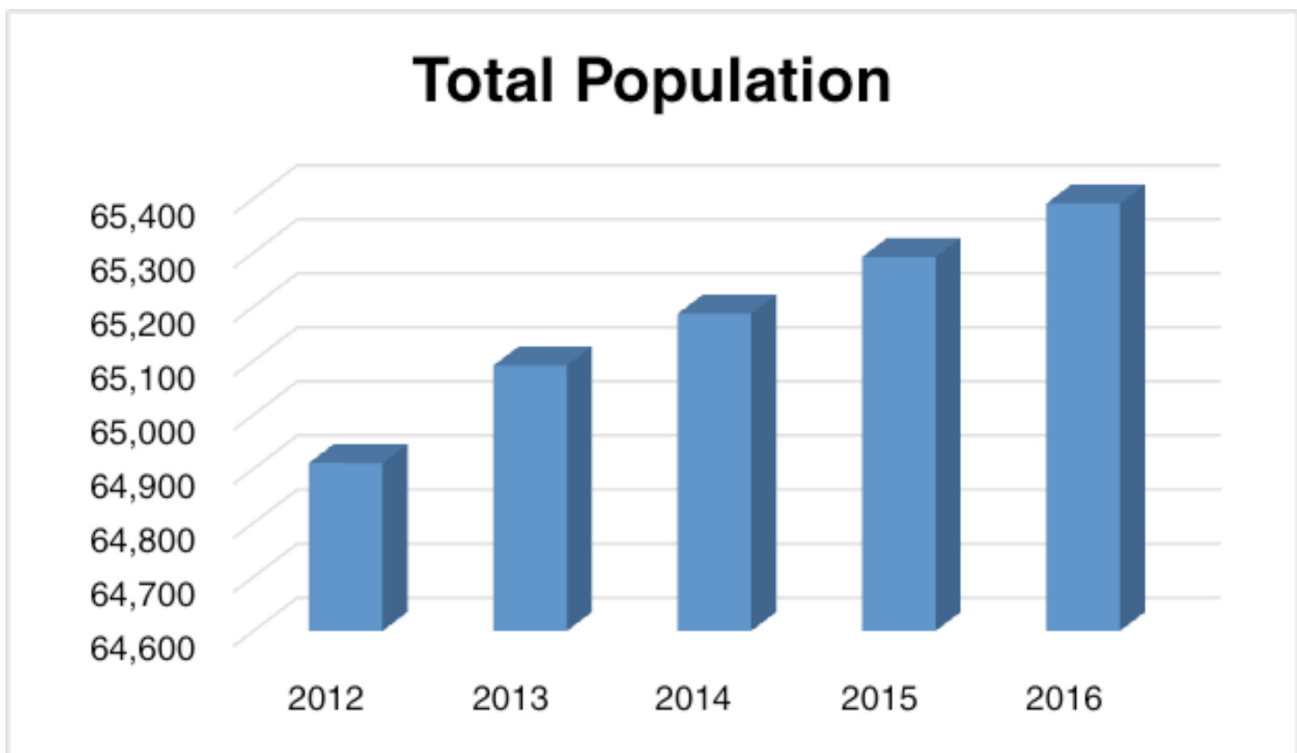
There was an increase of 99 or 0.15% in the estimated resident population at the end of 2016 at 65,391 as opposed to the 65,292 in resident population estimate in 2015. At the end of 2016 there were 2,751 more females than males in the population figures. (See Table 1.0)

The average increase in population over the past five years is 141 persons.

The statistics compiled by the Registry General do not take into consideration any effects on the population due to emigration or immigration.

Figure 1.0 shows the growth of the population over the past five years.

**Figure 1.0**  
Population Estimates 2012 to 2016







# BIRTHS

## Distribution of Live Births by Sex and Natal Status – 2012 to 2016

In 2016 the total number of live births of 591 births reflects a slight increase of 8 or 1.4% over the previous year. The live births in respect of residents recorded in 2015 were 583. Out of the total number of live births recorded in 2016, 303 were male and 288 were female. In 2015, 295 male and 288 female live births were recorded.

There were eleven babies born at the parent's homes in St. George's, Smith's, Devonshire, Pembroke, Paget, Warwick and Southampton parish. This is an increase of 6 from the five babies born at home in 2015.

The total number of births for the year 2016 born out of wedlock was 250, a decrease of 16 from the previous year. A cumulative total of 3,074 live births were recorded for the five-year period from 2012 to 2016. The overall percentage of live births occurring out of wedlock was 41.8% over the same five-year period.

Table 2.0 shows the distribution of births by sex and natal status for the years 2012 to 2016.

**Table 2.0**  
Distribution of Live Births by Sex and Natal Status – 2012 to 2016

Year	In Wedlock			Out of Wedlock			Live Births			% Out of Wedlock
	Male	Female	Total	Male	Female	Total	Male	Female	Total	
2012	176	213	389	136	123	259	312	336	648	40.0
2013	187	188	375	136	140	276	323	328	651	42.4
2014	177	174	351	112	111	223	289	285	574	38.9
2015	164	153	317	131	135	266	295	288	583	45.6
2016	168	173	341	135	115	250	303	288	591	42.3
<b>Total</b>	<b>872</b>	<b>901</b>	<b>1,773</b>	<b>650</b>	<b>624</b>	<b>1,274</b>	<b>1,522</b>	<b>1,525</b>	<b>3,047</b>	<b>41.8</b>

## Distribution of Live Births by Parish

The majority of babies are born at the King Edward VII Memorial Hospital in Paget parish. However, for the purpose of this Report, the statistics shown in Table 2.1 below, relate to the parishes of residence of the mothers of the newborns at the time of birth and not to the parishes where the babies were actually born. The highest number of births by parish out of an island-wide total of 591 was recorded among the residents of Warwick parish who were responsible for 101 or 17.1% followed by the residents of Pembroke parish who were responsible for 81 or 13.7% of the total number of births recorded.

Table 2.1 shows the distribution of births by sex, natal status and parish.

**Table 2.1**  
**Distribution of Live Births by Sex, Natal Status and Parish – 2016**

Parish	In Wedlock			Out of Wedlock			Grand Total	% Out of Wedlock
	Male	Female	Total	Male	Female	Total		
St. George's	7	11	18	25	7	32	50	64.0%
Hamilton	20	18	38	12	8	20	58	34.5%
Smith's	24	17	41	7	4	11	52	21.2%
Devonshire	19	16	35	17	14	31	66	47.0%
Pembroke	24	17	41	17	23	40	81	49.4%
Paget	22	20	42	6	8	14	56	25.0%
Warwick	25	42	67	17	17	34	101	33.7%
Southampton	12	16	28	9	8	17	45	37.8%
Sandys	15	16	31	25	26	51	82	62.2%
<b>Total</b>	<b>168</b>	<b>173</b>	<b>341</b>	<b>135</b>	<b>115</b>	<b>250</b>	<b>591</b>	<b>42.3%</b>

### Multiple Births

The number of sets of twins born in a single year continues to stand at 19 for the year 2013 as was the record number. In 2016 eleven multiple births were recorded, a slight increase from the 8 recorded in 2015. Six sets consisted of both female children, two sets of both male children and three sets of one male child and one female child out of the eleven sets of twins born in 2016.

Table 2.2 shows the distribution of multiple births by sex over the past five years.

**Table 2.2**  
**Distribution of Multiple Births by Sex – 2012 to 2016**

Year	Both Male	Both Female	Male & Female	Annual Total
2012	1	3	5	9
2013	5	6	8	19
2014	2	3	3	8
2015	2	4	2	8
2016	2	6	3	11
<b>Total</b>	<b>12</b>	<b>22</b>	<b>21</b>	<b>55</b>

## Distribution of Live Births by Age of Mother

Women between the ages of 30 and 34 years continue to account for the highest number of the babies born in 2016 at 193 or 32.7%. This remains consistent with the figures over the past five years. For the period 2012 to 2016 women in the age group 35 to 39 years accounted for the second highest number of babies at 149 or 25.1%, and women in the age group 25 to 29 years account for the third highest number of babies at 131 or 20.6%. The two age groups (30 – 34 year olds and 35 to 39 year olds) were responsible 57.9% of the 2016 births. There was one baby born to a mother under the age of 16 in 2016, while no babies were born to mothers under the age of 16 in 2015.

Figure 2.0 shows the distribution of births by age of mother and natal status for the year ended 31st December, 2016. It can be seen from Figure 2.0 that married women between the ages of 30 and 34 years comprised the group responsible for the largest number of babies born.

**Figure 2.0**  
Distribution of Live Births by Age of Mother and Natal Status – 2016

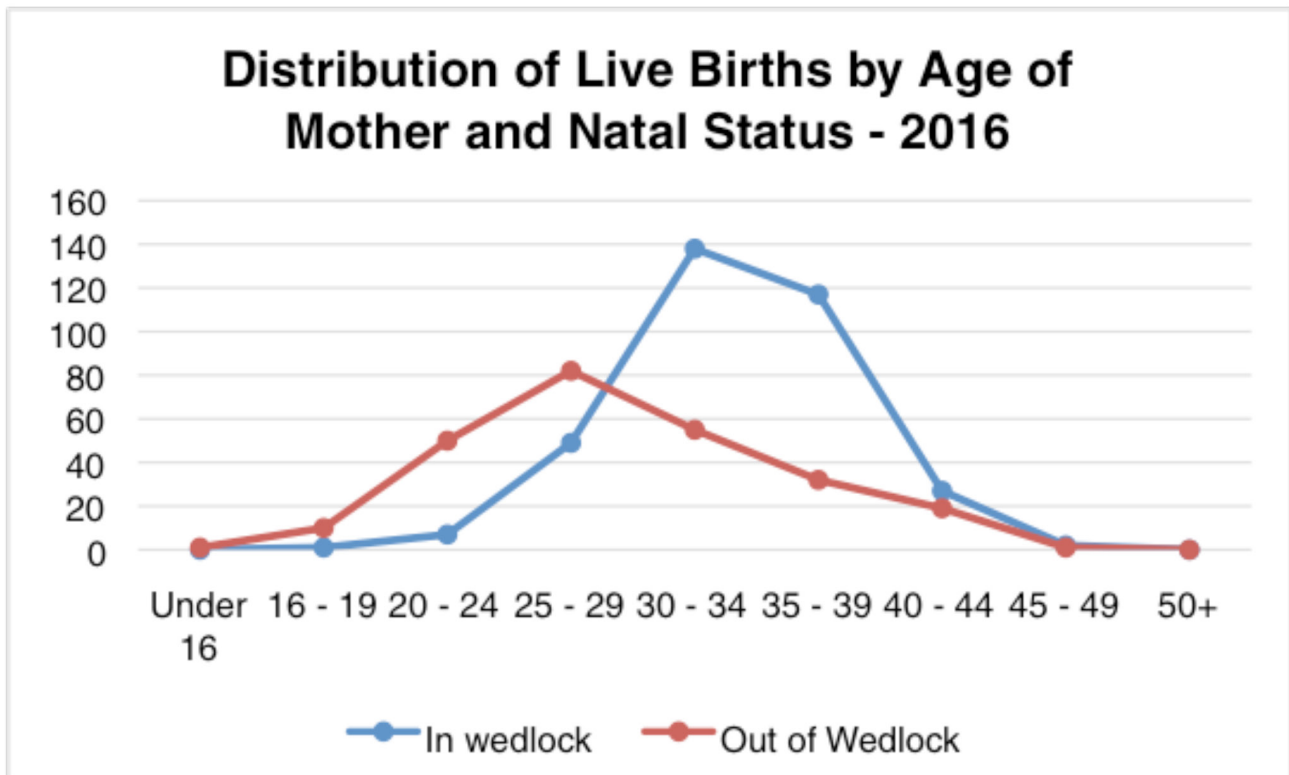


Table 2.3 shows the distribution of live births according to the age group of the mother for the five-year period 2012 to 2016. The peak in out of wedlock births as well as in wedlock births occurs in respect of mothers in the 30 – 34 years old bracket for 2016.

**Table 2.3**

**Distribution of Live Births by Age of Mother of Children Born In Wedlock - 2012 to 2016**

Year	Under 16	16 – 19	20 – 24	25 – 29	30 – 34	35 – 39	40 – 44	45 – 49	50+	Total
2012	0	0	18	64	140	126	34	2	0	381
2013	0	1	7	60	141	123	41	2	0	375
2014	0	1	12	53	134	114	35	2	0	351
2015	0	0	4	35	144	111	21	2	0	317
2016	0	1	7	49	138	117	27	2	0	341
<b>Total</b>	<b>0</b>	<b>3</b>	<b>48</b>	<b>261</b>	<b>697</b>	<b>591</b>	<b>158</b>	<b>14</b>	<b>1</b>	<b>1,773</b>

**Table 2.3 continued**

**Distribution of Live Births by Age of Mother of Children Born Out of Wedlock – 2012 to 2016**

Year	Under 16	16 – 19	20 – 24	25 – 29	30 – 34	35 – 39	40 – 44	45 – 49	50+	Total
2012	1	10	75	83	47	28	13	2	0	259
2013	1	21	62	64	79	36	13	0	0	276
2014	2	8	46	62	64	36	5	0	0	223
2015	0	10	40	77	80	42	16	1	0	266
2016	1	10	50	82	55	32	19	1	0	250
<b>Total</b>	<b>5</b>	<b>59</b>	<b>273</b>	<b>368</b>	<b>325</b>	<b>174</b>	<b>66</b>	<b>4</b>	<b>0</b>	<b>1,274</b>

**Table 2.3 continued**

**Distribution of All Live Births by Age of Mother – 2012 to 2016**

Year	Under 16	16 – 19	20 – 24	25 – 29	30 – 34	35 – 39	40 – 44	45 – 49	50+	Total
2012	1	10	93	147	187	154	47	8	1	648
2013	1	22	69	124	220	159	54	2	0	651
2014	2	9	58	115	198	150	40	2	0	574
2015	0	10	44	112	224	153	37	3	0	583
2016	1	11	57	131	193	149	46	3	0	591
<b>Total</b>	<b>5</b>	<b>62</b>	<b>321</b>	<b>629</b>	<b>1,022</b>	<b>765</b>	<b>224</b>	<b>18</b>	<b>1</b>	<b>3,126</b>

## Distribution of Live Births by Nationality

It is important to note that the following statistics on the nationality of newborns are compiled based on information provided by parents at the time of registration of their children's births.

There were 341 babies born in wedlock in 2016. One hundred and six babies or 31.1% were born of parents who are both Bermudian; 106 or 31.1% were born of parents who are both non-Bermudian; and 129 or 37.8% were born where one of the parents is Bermudian and the other a non-Bermudian.

There were 250 babies born out of wedlock in 2016, 214 or 85.6% have parents who are both Bermudian; 12 or 4.8% have parents who are both non-Bermudian and 24 or 9.6% have one Bermudian parent and the other a non-Bermudian parent.

Children with two non-Bermudian parents account for 118 or 20.0% of the total number of births in 2016, as compared to the 146 or 25.0% of the total births in 2015.

Over the five year period, 2012 to 2016, the percentage of children born to parents who were both Bermudian ranged from 49.8% in 2014 to 54.1% in 2016 with a median rate of 52.3%. For this same period the percentage of children born to one Bermudian parent and one non-Bermudian parent ranged from 21.6% to 27.0%.

Table 2.4 reflects the distribution of these births for the years 2012 to 2016.

The nationalities of the non-Bermudian parents, gathered for statistical purpose, represent over 42 different countries. The most frequently identified countries continue to be Canada, Great Britain, the United States of America, Jamaica, Portugal, the Philippines, and South Africa.

## ADDITIONAL VITAL EVENTS

### Re-registrations

Re-registration is the process by which the births of children born out of wedlock are registered as if born in wedlock on the marriage of their biological parents. In 2016 there were 3 re-registrations conducted in the Registry General.

### Adoptions

In 2016 there were four adoptions recorded, an increase of one from the three adoptions recorded in 2015. Two of the adoptees were male and two were female. The ages of the adoptees were 2, 11, 19 and 20 years old.

**Table 2.4**  
**Distribution of Live Births by Nationality 2012-2016**

	In Wedlock					% In Wedlock					% Total Births				
	2012	2013	2014	2015	2016	2012	2013	2014	2015	2016	2012	2013	2014	2015	2016
<b>Year</b>															
Both Bermudian Parents	120	105	104	91	106	30.8%	28.0%	29.6%	28.7%	31.1%	18.5%	16.1%	18.1%	15.6%	17.9%
One Bermudian and One Non Bermudian Parent	132	132	128	102	129	33.9%	35.2%	36.5%	32.2%	37.8%	20.4%	20.3%	22.3%	17.5%	21.8%
At Least One Bermudian Parent	252	237	232	193	235	64.8%	63.2%	66.1%	60.9%	68.9%	38.9%	36.4%	40.4%	33.1%	39.8%
Both Non Bermudian Parents	137	138	119	124	106	35.2%	36.8%	33.9%	39.1%	31.1%	21.1%	21.2%	20.7%	21.3%	17.9%
<b>Total In Wedlock Births</b>	<b>389</b>	<b>375</b>	<b>351</b>	<b>317</b>	<b>341</b>	<b>100.0%</b>	<b>100.0%</b>	<b>100.0%</b>	<b>100.0%</b>	<b>100.0%</b>	<b>60.0%</b>	<b>57.6%</b>	<b>61.1%</b>	<b>54.4%</b>	<b>57.7%</b>
	<b>Out of Wedlock</b>					<b>% Out of Wedlock</b>					<b>% Total Births</b>				
<b>Year</b>															
Both Bermudian Parents	219	226	182	220	214	84.6%	81.9%	81.6%	82.7%	85.6%	33.8%	34.7%	31.7%	37.7%	36.2%
One Bermudian and One Non Bermudian Parent	30	30	27	24	24	11.6%	10.9%	12.1%	9.0%	9.6%	4.6%	4.6%	4.7%	4.1%	4.1%
At Least One Bermudian Parent	249	256	209	244	238	96.1%	92.8%	93.7%	91.7%	95.2%	38.4%	39.3%	36.4%	41.9%	40.3%
Both Non Bermudian Parents	10	20	14	22	12	3.9%	7.2%	6.3%	8.3%	4.8%	1.5%	3.1%	2.4%	3.8%	2.0%
<b>Total Out of Wedlock Births</b>	<b>259</b>	<b>276</b>	<b>223</b>	<b>266</b>	<b>250</b>	<b>100.0%</b>	<b>100.0%</b>	<b>100.0%</b>	<b>100.0%</b>	<b>100.0%</b>	<b>40.0%</b>	<b>42.4%</b>	<b>38.9%</b>	<b>45.6%</b>	<b>42.3%</b>
	<b>Total</b>					<b>% Total</b>					<b>% Total Births</b>				
<b>Year</b>															
Both Bermudian Parents	339	331	286	311	320	52.3%	50.8%	49.8%	53.3%	54.1%	52.3%	50.8%	49.8%	53.3%	54.1%
One Bermudian and One Non Bermudian Parent	162	162	155	126	153	25.0%	24.9%	27.0%	21.6%	25.9%	25.0%	24.9%	27.0%	21.6%	25.9%
At Least One Bermudian Parent	501	493	441	437	473	77.3%	75.7%	76.8%	75.0%	80.0%	77.3%	75.7%	76.8%	75.0%	80.0%
Both Non Bermudian Parents	147	158	133	146	118	22.7%	24.3%	23.2%	25.0%	20.0%	22.7%	24.3%	23.2%	25.0%	20.0%
<b>Total Live Births</b>	<b>648</b>	<b>651</b>	<b>574</b>	<b>583</b>	<b>591</b>	<b>100.0%</b>	<b>100.0%</b>	<b>100.0%</b>	<b>100.0%</b>	<b>100.0%</b>	<b>100.0%</b>	<b>100.0%</b>	<b>100.0%</b>	<b>100.0%</b>	<b>100.0%</b>



# MARRIAGES

## Statistics Relating to Marriages – 2012 to 2016

Marriage statistics include all marriages that took place in Bermuda irrespective of the country of residence of the parties. There were a total of 450 marriages recorded for the year ending December 31, 2016, representing a decrease of 59 or 11.6% from the 2015 figure of 509.

The number of civil ceremonies performed by the Registrar General totalled 551 or 22.0% of the total of 2,508 marriages recorded over the past five years. The remaining 1,957 marriages were religious ceremonies held at places of worship throughout the Island and at an assortment of other venues.

Table 3.0 provides a distribution of marriages by type of ceremony.

**Table 3.0**  
**Distribution of Marriages by Type of Ceremony – 2011 to 2015**

Year	Religious/Denominational Marriages	Civil Marriages	Total
2012	478	123	601
2013	356	115	471
2014	381	96	477
2015	391	118	509
2016	351	99	450
<b>Total</b>	<b>1,957</b>	<b>551</b>	<b>2,508</b>



**In 2016 there were 73 marriages performed in places of worship, 278 marriages were celebrated at other venues, and 99 civil marriage ceremonies were held of which 93 took place at the Registry General and 6 ceremonies were conducted at alternative approved locations.”**

## Distribution of Marriages by Religion/Denomination

In 2016 there were 73 marriages performed in places of worship. Of those 23 or 31.5% were held at Anglican churches on the Island; 50 or 68.5% of ceremonies were held at other churches throughout the island.

Table 3.1 gives a breakdown of marriages by religion/denomination for the period 2012 to 2016.

**Table 3.1**  
**Distribution of Marriages by Religion/Denomination – 2012 to 2016**

Year	Anglican	African Methodist Episcopal	Wesleyan Methodist	Presbyterian	Roman Catholic	Seventh-Day Adventist	Other Religions/Denominations <sup>1</sup>	Total Religious Marriages
2012	34	4	0	7	15	6	412	478
2013	23	6	2	3	5	7	310	356
2014	27	12	0	1	10	6	325	381
2015	27	9	4	6	13	7	325	391
2016	23	11	3	5	8	5	296 <sup>2</sup>	351
<b>Total</b>	<b>134</b>	<b>42</b>	<b>9</b>	<b>22</b>	<b>51</b>	<b>31</b>	<b>1,668</b>	<b>1,957</b>

<sup>1</sup> Includes religious ceremonies held at places of worship of other religions/denominations and religious ceremonies held at venues other than church buildings.

<sup>2</sup> Includes 18 religious ceremonies held at other places of worship.

## Marriage Venues

The Registry General conducted 99 civil marriage ceremonies or 22% of all marriages taking place in 2016. Of the 99 civil marriage ceremonies performed, six ceremonies were conducted at alternative approved locations provided for under the Marriage (Alternative Approved Locations) Regulations 2016. There were 73 marriages were celebrated at places of worship identified in Table 3.2 below. Also, there were 278 marriages that were performed at other venues, of which 119 took place in hotels, restaurants, guest houses or clubs; and a further 159 were performed in homes, gardens, parks, or on beaches and boats. 61.8% of the marriages performed in 2016 took place at locations other than places of worship or the Registry General.

Table 3.2 shows the distribution of marriages by parish and venue. Pembroke parish continues to record the highest number of marriages, primarily due to the high incidence of civil marriage ceremonies. Southampton, Warwick and Paget parishes also accounted for a relatively large number of marriage ceremonies due to the number of ceremonies conducted within their boundaries at venues other than places of worship.



**Table 3.2**  
**Distribution of Marriages by Parish and Venue – 2016**

Parish	Anglican	African Methodist Episcopal	Wesleyan Methodist	Presbyterian	Roman Catholic	Seventh-Day Adventist	Other Places of worship	Venues Other than Church Buildings <sup>1</sup>	Civil Marriages	Total
St. George's	5	0	1	0	1	2	2	27	0	38
Hamilton	3	1	0	0	0	2	0	11	0	17
Smith's	2	1	0	0	1	0	0	4	0	8
Devonshire	7	0	0	0	0	0	2	4	1	14
Pembroke	3	5	2	0	4	1	10	14	96	135
Paget	1	0	0	0	1	0	1	32	0	35
Warwick	0	0	0	5	0	0	0	87	2	94
Southampton	2	3	0	0	0	0	2	63	0	70
Sandys	0	1	0	0	1	0	1	36	0	39
<b>Total</b>	<b>23</b>	<b>11</b>	<b>3</b>	<b>5</b>	<b>8</b>	<b>5</b>	<b>18</b>	<b>278</b>	<b>99</b>	<b>450</b>

<sup>1</sup> Religious ceremony held outside of places of worship – on beaches, boats, in hotels, guest houses, restaurants, clubs, homes, gardens, parks, etc.

### Persons Marrying by Age Group of Partners

The largest number of persons who married in 2016 and 2015 is represented by the age group of 30 – 34 year olds. Two Hundred and fourteen, or 23.8%, of the total of 900 persons who married during 2016 were between 30 and 34 years of age.

Table 3.3 shows the comparative distribution of age and sex of persons married in 2016 and 2015.

**Table 3.3**  
**Distribution of Persons Marrying by Sex and Age of Partners – 2016 and 2015**

Age	2016			2015		
	Male	Female	Total	Male	Female	Total
16–19	0	1	1	1	2	3
20–24	11	16	27	16	38	54
25–29	68	87	155	89	116	205
30–34	99	115	214	113	115	228
35–39	77	67	144	66	56	122
40–44	52	55	107	52	49	101
45–49	50	45	95	46	40	86
50–54	32	26	58	46	44	90
55–59	31	24	55	42	26	68
60–64	15	4	19	18	16	34
65–69	6	7	13	9	2	11
70–74	6	2	8	7	3	10
75–79	0	1	1	4	1	5
80–89	3	0	3	0	1	1
90 & over	0	0	0	0	0	0
<b>Total</b>	<b>450</b>	<b>450</b>	<b>900</b>	<b>509</b>	<b>509</b>	<b>1,018</b>

## Distribution of Marriages by Residential Status of Partners

During 2016 non-residents accounted for 231 or 51.3% of the total of 450 marriages taking place. This figure, representing a decrease of 2.1 percentage points over the previous year's figure, is in keeping with the trend over the past five years for marriages between non-residents to exceed the total number of marriages between residents and marriages between residents and non-residents.

Table 3.4 shows the distribution of marriages from 2012 to 2016 by residential status of the parties to the marriage.

**Table 3.4**  
Distribution of Marriages by Residential Status – 2012 to 2016

Year	Residents <sup>1</sup>	Non-Residents <sup>2</sup>	Residents & Non-Residents <sup>3</sup>	Total
2012	253	310	38	601
2013	191	245	35	471
2014	173	260	44	477
2015	194	272	43	509
2016	177	231	42	450
Total	988	1,318	202	2,508

<sup>1</sup>Marriages between parties who were both residents

<sup>2</sup>Marriages between parties who were both non-residents

<sup>3</sup>Marriages between a party who was a resident and a non-resident party

## Maritime Marriages

There were a total of 468 marriages performed on board 28 Bermuda registered ships, in 2016. This total represents a decrease of 97 or 17.2% from the 2015 total of 565.



During 2016 non-residents accounted for 231 or 51.3% of the total of 450 marriages taking place.



# DEATHS

## Death Statistics Including Stillbirths – 2012 to 2016

The number of deaths of residents recorded in 2016 was 492; an increase of 14 or 2.9% from 478 deaths recorded in 2015. There was one stillbirth recorded in 2016 and two were recorded in 2015.

Table 4.0 contains a breakdown of deaths over the period 2012 to 2016 by sex and stillbirths. The figures show that the total number of deaths among males exceeded that among females for the period. The number of still births recorded for the period ranged between 1 and 3 per year with an average of 2 over the five year span.

**Table 4.0**  
**Distribution of Deaths by Sex and Stillbirths – 2012 to 2016**

Year	Male	Female	Total	Stillbirths
2012	244	178	422	2
2013	251	220	471	3
2014	244	234	478	2
2015	260	218	478	2
2016	266	226	492	1
<b>Total</b>	<b>1,265</b>	<b>1,076</b>	<b>2,341</b>	<b>10</b>



In 2016, there were 492 residential deaths recorded; an increase of 14 or 2.9% from 478 deaths recorded in 2015.

## Deaths by Age and Sex – 2012 to 2016 (Excluding stillbirths and non-resident deaths)

Table 4.1 shows a breakdown of deaths, by age groups, occurring between 2012 and 2016.

The average age at death was 69.2 years for males, 78.2 years for females and 73.3 years for all persons in 2016.

**Table 4.1**  
**Distribution of Deaths by Age and Sex – 2012 to 2016**

Age	2012			2013			2014			2015			2016		
Group	M	F	T	M	F	T	M	F	T	M	F	T	M	F	T
0 – 4	1	0	1	2	1	3	1	1	2	2	0	2	2	0	2
5 – 9	0	1	1	1	0	1	0	0	0	0	0	0	0	1	1
10 – 14	1	0	1	0	0	0	0	1	1	0	0	0	0	1	1
15 – 19	1	0	1	1	0	1	2	0	2	1	0	1	2	1	3
20 – 24	3	0	3	4	0	4	4	0	4	2	1	3	4	0	4
25 – 29	6	0	6	3	0	3	3	0	3	1	0	1	2	2	4
30 – 34	3	0	3	5	1	6	1	0	1	3	0	3	4	2	6
35 – 39	2	1	3	2	1	3	2	1	3	0	1	1	6	1	7
40 – 44	5	1	6	8	3	11	2	0	2	1	2	3	4	3	7
45 – 49	10	2	12	9	1	10	5	3	8	2	4	6	4	2	6
50 – 54	9	8	17	13	8	21	19	6	25	10	4	14	14	4	18
55 – 59	18	5	23	20	5	25	15	10	25	21	8	29	15	16	31
60 – 64	20	9	29	22	10	32	21	10	31	17	11	28	33	8	41
65 – 69	22	12	34	15	18	33	22	8	30	27	12	39	25	14	39
70 – 74	25	13	38	21	18	39	25	27	52	31	17	48	33	17	50
75 – 79	37	25	62	30	30	60	38	23	61	32	26	58	36	22	58
80 – 84	35	28	63	34	36	70	29	27	56	36	36	72	30	32	62
85 – 89	25	27	52	37	39	76	34	56	90	39	45	84	30	32	62
90 – 94	17	24	41	19	29	48	15	36	51	16	31	47	19	45	64
95 – 99	2	16	18	5	15	20	5	20	25	5	10	15	3	19	22
Over 100	2	6	8	0	5	5	1	5	6	1	8	9	0	4	4
<b>Total</b>	<b>244</b>	<b>178</b>	<b>422</b>	<b>251</b>	<b>220</b>	<b>471</b>	<b>244</b>	<b>234</b>	<b>478</b>	<b>260</b>	<b>218</b>	<b>478</b>	<b>266</b>	<b>226</b>	<b>492<sup>1,2</sup></b>

M = Male, F = Female, T = Total.

<sup>1</sup> Excludes eleven non-resident deaths

<sup>2</sup> Excludes one stillbirths

## Distribution of Deaths by Age and Sex – 2016 (Excluding stillbirths and non-resident deaths)

Table 4.2 shows the distribution of deaths within various age groups as a percentage of the total number of deaths occurring in 2016 among the resident population.

Within the 90 – 94 year-old age group 64 or 13% of deaths occurred, followed by 62 or 12.6 % in both the 80 – 84 and 85 – 89 year-old age groups out of a total of 492 deaths recorded. The number of women exceeded the number of men in the distribution of deaths between the sexes in the age groups 55 – 59 years as well as all age groups above 80 years. However, the number of deaths for men exceeds that of women for all age groups below 79, except age groups 55 – 59, 5 – 9 and 10 – 14.

**Table 4.2**  
**Distribution of Deaths by Age and Sex – 2016**

Age	Male	Female	Total	Per cent		
				Male	Female	Total
0 – 4	2	0	2	0.41	0.00	0.41
5 – 9	0	1	1	0.000	0.20	0.20
10 – 14	0	1	1	0.000	0.20	0.20
15 – 19	2	1	3	0.41	0.20	0.61
20 – 24	4	0	4	0.81	0.00	0.81
25 – 29	2	2	4	0.41	0.41	0.81
30 – 34	4	2	6	0.81	0.41	1.22
35 – 39	6	1	7	1.22	0.20	1.42
40 – 44	4	3	7	0.81	0.61	1.42
45 – 49	4	2	6	0.81	0.41	1.22
50 – 54	14	4	18	2.85	0.81	3.66
55 – 59	15	16	31	3.05	3.25	6.30
60 – 64	33	8	41	6.71	1.63	8.33
65 – 69	25	14	39	5.08	2.85	7.93
70 – 74	33	17	50	6.71	3.46	10.16
75 – 79	36	22	58	7.32	4.47	11.79
80 – 84	30	32	62	6.10	6.50	12.60
85 – 89	30	32	62	6.10	6.50	12.60
90 – 94	19	45	64	3.86	9.15	13.01
95 – 99	3	19	22	0.61	3.86	4.47
Over 100	0	4	4	0.000	0.81	0.81
<b>Total</b>	<b>266</b>	<b>226</b>	<b>492<sup>1,2</sup></b>	<b>54.07</b>	<b>45.93</b>	<b>100.0</b>

## Distribution of Deaths by Age and Parish of Residence of the Deceased – 2016 (Excluding stillbirths and non-resident deaths)

Table 4.3 contains a breakdown of deaths by parish of residence of the deceased within specific age groups. Pembroke Parish residents recorded 83 or 16.9% of deaths in 2016. This figure which represents the largest number of deaths in a single parish for the total number of deaths recorded for the year.

Four deaths were recorded in 2016 with respect to persons over the age of 100 years. Two of these decedents were resident in Paget. St. George's and Hamilton also each had one decedent resident in their parish.

**Table 4.3**  
**Distribution of Deaths by Age and Parish of Residence of the Deceased – 2016**

											% Overall	
Age	St. George's	Hamilton	Smith's	Devonshire	Pembroke	Paget	Warwick	Southampton	Sandys	Total	Total	
0–11 m	1	0	0	0	0	0	0	1	1	2	0.41	
12–23 m	0	0	0	0	0	0	0	0	0	0	0.00	
2–4	0	0	0	0	0	0	0	0	0	0	0.00	
5–9	0	0	0	0	0	0	1	0	0	1	0.20	
10–14	0	0	0	0	1	0	0	0	0	1	0.20	
15–19	0	0	0	1	0	0	0	0	2	3	0.61	
20–24	0	0	0	0	0	0	1	1	2	4	0.81	
25–29	0	1	0	1	2	0	0	0	0	4	0.81	
30–34	2	0	0	1	1	1	1	0	0	6	1.22	
35–39	1	0	0	0	2	0	2	1	1	7	1.42	
40–44	0	0	0	0	2	1	2	2	0	7	1.42	
45–49	0	1	0	0	2	0	2	0	1	6	1.22	
50–54	3	1	1	1	1	5	0	3	3	18	3.66	
55–59	2	3	3	5	3	4	7	1	3	31	6.30	
60–64	8	6	2	2	8	3	3	4	5	41	8.33	
65–69	6	7	2	4	8	1	6	1	4	39	7.93	
70–74	6	1	3	6	13	4	6	7	4	50	10.16	
75–79	1	5	4	8	10	3	8	10	9	58	11.79	
80–84	10	4	5	8	8	7	7	5	8	62	12.60	
85–89	8	6	3	12	6	2	8	5	12	62	12.60	
90–94	7	8	3	10	10	6	6	5	9	64	13.01	
95–99	5	1	2	3	6	1	1	2	1	22	4.47	
Over 100	1	1	0	0	0	2	0	0	0	4	0.81	
<b>Total</b>	<b>61</b>	<b>45</b>	<b>28</b>	<b>62</b>	<b>83</b>	<b>40</b>	<b>61</b>	<b>47</b>	<b>65</b>	<b>492<sup>1,2</sup></b>	<b>100.0</b>	

<sup>1</sup> Excludes seven non-residents.

<sup>2</sup> Excludes one stillbirth.

## Infant Mortality Rates

In 2016 two infant deaths were recorded.

Table 4.4 shows the number of infant deaths and the infant mortality rate per thousand live births for the period 2012 to 2016.

**Table 4.4**  
**Infant Mortality – 2012 to 2016**

Year	Infant Deaths	Rate per 1000
2012	1	1.5
2013	1	1.5
2014	1	1.7
2015	2	3.4
2016	2	3.4



There were two infant deaths recorded in 2016. Table 4.4 shows the number of infant death and the infant mortality rate per thousand live births for the period 2012 to 2016.

## Deaths of Non-Residents – 2016

There were eleven deaths recorded amongst non-residents in 2016, four deaths in respect of female visitors and seven of the deaths were in respect of male visitors. Nine of the visitors died from natural causes. The remaining two died from drowning.

Table 4.5 shows the total number of deaths of non-residents by sex for the years 2012 to 2016.

**Table 4.5**  
**Deaths of Non-Residents – 2012 to 2016**

Year	Male	Female	Total
2012	12	3	15
2013	6	3	9
2014	3	4	7
2015	7	2	9
2016	7	4	11
<b>Total</b>	<b>35</b>	<b>16</b>	<b>51</b>

### Coroners' Cases

There were 88 deaths investigated by the Coroner's office in 2016 of which eight related to visitors to the Island.



The number of deaths for men exceeds that of women for all age groups below 79, except age groups 5 – 9, 10 – 14 and 55 – 59.



# APPENDIX

**Table A – Births, Marriages, Deaths and Population Estimates – 2012 to 2016**

Year	Births	Marriages	Deaths	Population Estimates <sup>1</sup>
2012	648	601	422	64,911
2013	651	471	471	65,091
2014	574	477	478	65,187
2015	583	509	457	65,292
2016	591	450	492	65,391

<sup>1</sup> Population estimates are based on the 2010 Census on Population in Bermuda and natural increases from 21 May 2010.

**Figure A – Births, Marriages and Deaths – 2012 to 2016**

