

Evaporator I

# GENERATOR AB

CHARGE-FÖRTECKN  
CAST-LIST

BESTÄLLARE/PURCHASER: **BERMUDA**

ORDER NR./ORDER NO: **1479**


BLAD NR./PAGE N

ARTIKEL/ARTICLE: **KONVEKTIONS DELAR**

TILLY.NR./MANUFACTURING NO: **3567**

BENÄMNING/DESCRIPTION	DIMENSION/DIMENSION	KVALITET QUALITY	ANTAL QUANTITY	CERTIFIKAT/CERTIFICATE			CHARGENUMMER/MI
				UTFÄRDARE/ISSUER	DATUM/DATE	NUMMER/NUMBER	
325-1027-1 TUB	48,3 x 4,5 x 4170	1330-16	76 ST	WIRSBO	870901	1479	78-3573 7
" : 2 "	48,3 x 4,5 x 4070	1330-16	76 ST	WIRSBO	870901	1479	78-3528
" : 6 "	88,9 x 6,3	35.8 III	28 M	MANNESMANN	870901	36655	219914
" : 7 "	76,1 x 6,3	1330-16	28 M	WIRSBO	870901	1479	78-3239
" : 14 GRAVEL	88,9 x 5	1430-01	16 ST		870901	1479	63-1883
325-1028-1 TUB	48,3 x 4,5 x 4270	1330-16	290 ST	WIRSBO	870901	1479	78-3573
" : 2 "	48,3 x 4,5 x 4070	1330-16	319 ST	WIRSBO	870901	1479	78-3578
" : 6 "	88,9 x 6,3	35.8 III	70 M	MANNESMANN	870901	36655	219914
" : 7 "	76,1 x 6,3	1330-16	70 M	WIRSBO	870901	1479	78-3239
" : 14 GRAVEL	88,9 x 5	1430-01	42 ST	APPELL	870901	1479	63-1883

Härmed intygas att ovanstående certifikat överensstämmer med angiven materialkvalite och ovanstående order:

 7/11-88  
Datum

Kontroll av d. / Företag

This is to certify that the above list of certificates is in accordance with stated material qualities and order.

4 0233



Evaporator II

# GENERATOR AB

CHARGE-FÖRTECKNING  
CAST-LIST

BESTÄLLARE/PURCHASER: **BERMUDA**

ORDER NR/ORDER NO: **1479**


BUD NR/PAGE NO

ARTIKEL/ARTICLE: **KONVEKTIONS DELAR**

TILLV NR/MANUFACTURING NO: **3567**

BENÄMNING/DESCRIPTION	DIMENSION/DIMENSION	KVALITET QUALITY	ANTAL QUANTITY	UFRÅGARE/ISSUER	CERTIFIKAT/CERTIFICATE		CHARGE-NUMBER/HE.
					DATA/DATE	NUMMER/NUMBER	
25-1027 1 TUB	48,3 x 45 x 4220	1330-16	76 ST	WIRSBO	820901	1479	78-3523 78
" " 2 "	48,3 x 45 x 4070	1330-16	76 ST	WIRSBO	820901	1479	78-3523
" " 6 "	88,9 x 6,3	35.8 III	28 M	MANUESHANN	820901	36655	219914
" " 7 "	76,1 x 6,3	1330-16	28 M	WIRSBO	820901	1479	78-3239
" " 14 GRAVEL	88,9 x 5	1430-01	16 ST		820901	1479	63-1883
325-1028-1 TUB	48,3 x 4,5 x 4220	1330-16	290 ST	WIRSBO	820901	1479	78-3523
" " 2 "	48,3 x 4,5 x 4020	1330-16	319 ST	WIRSBO	820901	1479	78-3528
" " 6 "	88,9 x 6,3	35.8 III	70 M	MANUESHANN	820901	36655	219914
" " 7 "	76,1 x 6,3	1330-16	70 M	WIRSBO	820901	1479	78-3239
" " 14 GRAVEL	88,9 x 5	1430-01	42 ST	APPELL	820901	1479	63-1883

Härmed intygas att ovanstående certifikat överensstämmer med angiven materialkvalitet och ovanstående order: .....

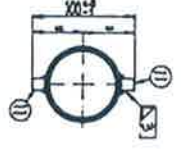
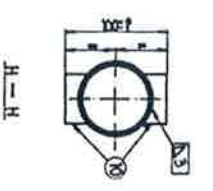
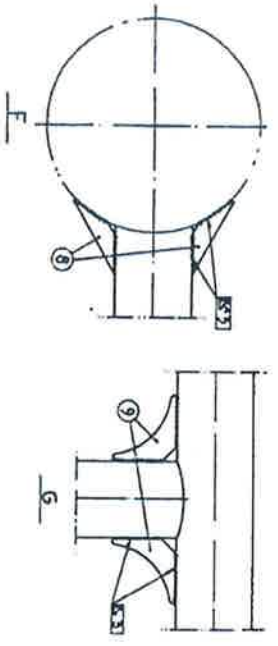
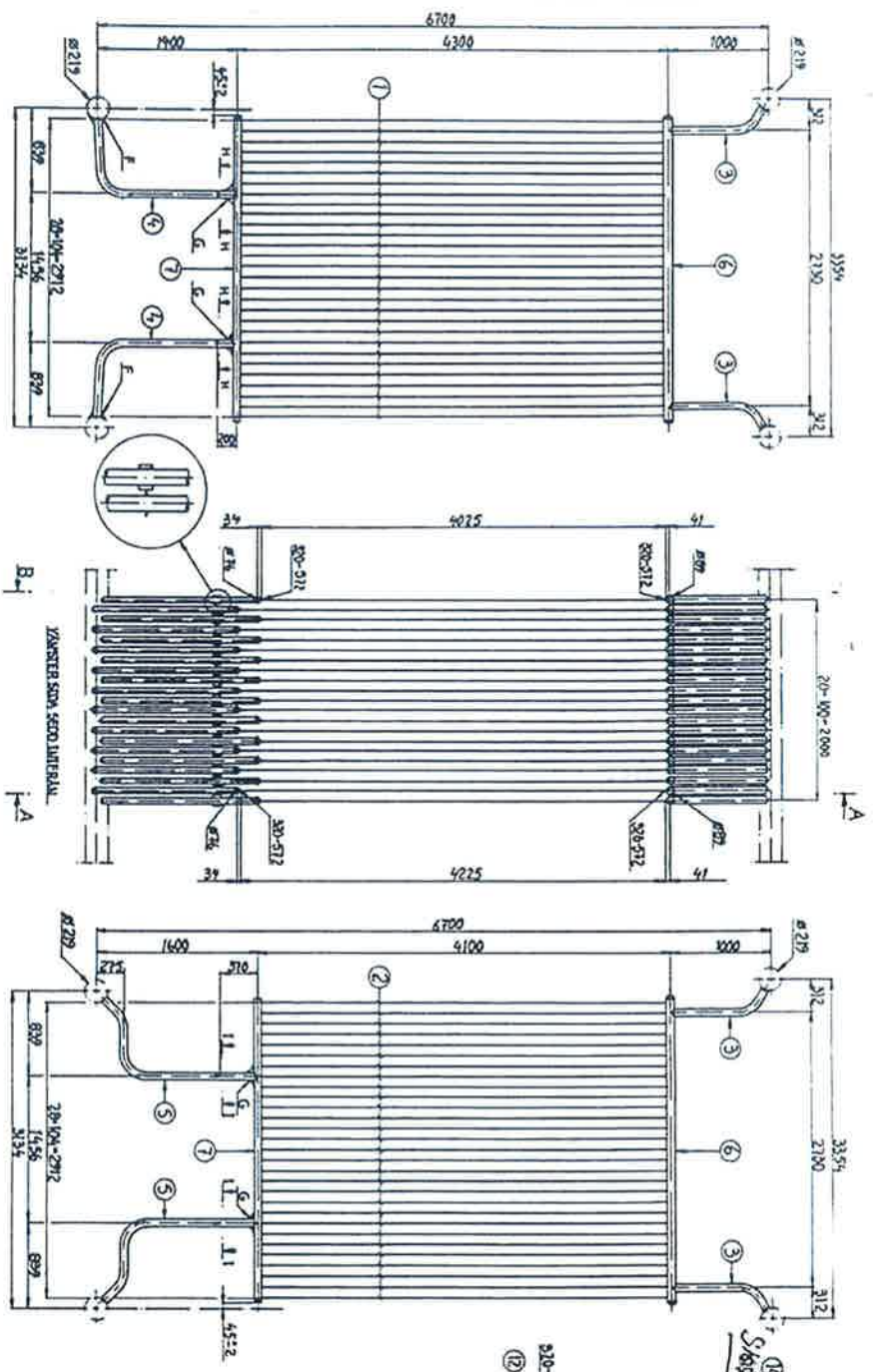
Kontroll avd./Företag  Datum **7/11-88**

This is to certify that the above list of certificates is in accordance with stated material qualities and order .....

4 0249

Evaporator II

1325-102F



APPROVED

4 0251

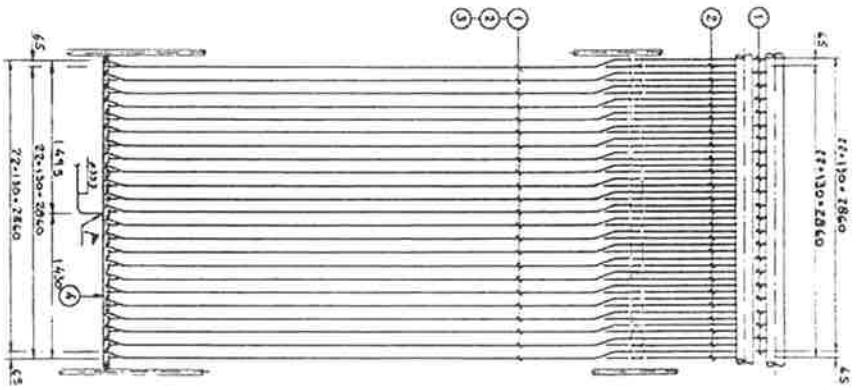
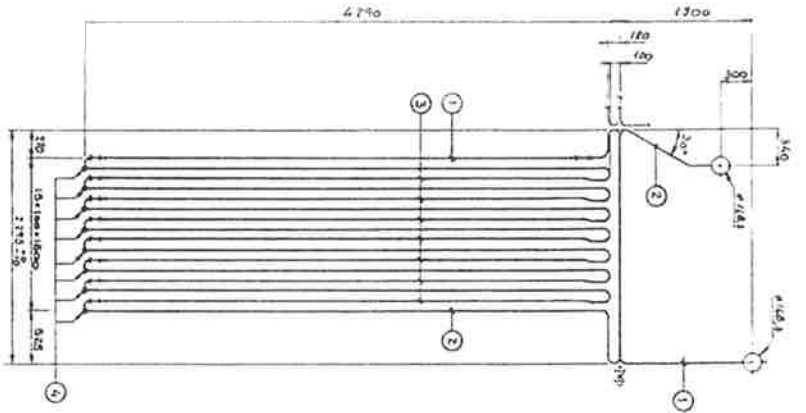
BRITISH ENGINE  
CORPORATION  
- 8 JUL 1988  
INSURANCE LTD.

Simple plan  
10 3567

VIKI DRAW: 11100 K (MARS)  
YONAH 4.03PM

NO	DESCRIPTION	QTY	UNIT	REMARKS
1	300-512	1	PC	
2	200-212	1	PC	
3	2792	1	PC	
4	2390	1	PC	
5	191	1	PC	
6	131	1	PC	
7	20-100-2912	1	PC	
8	2792	1	PC	
9	131	1	PC	
10	191	1	PC	
11	2792	1	PC	
12	2390	1	PC	
13	191	1	PC	
14	131	1	PC	
15	20-100-2912	1	PC	
16	2792	1	PC	
17	131	1	PC	
18	191	1	PC	
19	2792	1	PC	
20	2390	1	PC	
21	191	1	PC	
22	131	1	PC	
23	20-100-2912	1	PC	
24	2792	1	PC	
25	131	1	PC	
26	191	1	PC	
27	2792	1	PC	
28	2390	1	PC	
29	191	1	PC	
30	131	1	PC	
31	20-100-2912	1	PC	
32	2792	1	PC	
33	131	1	PC	
34	191	1	PC	
35	2792	1	PC	
36	2390	1	PC	
37	191	1	PC	
38	131	1	PC	
39	20-100-2912	1	PC	
40	2792	1	PC	
41	131	1	PC	
42	191	1	PC	
43	2792	1	PC	
44	2390	1	PC	
45	191	1	PC	
46	131	1	PC	
47	20-100-2912	1	PC	
48	2792	1	PC	
49	131	1	PC	
50	191	1	PC	





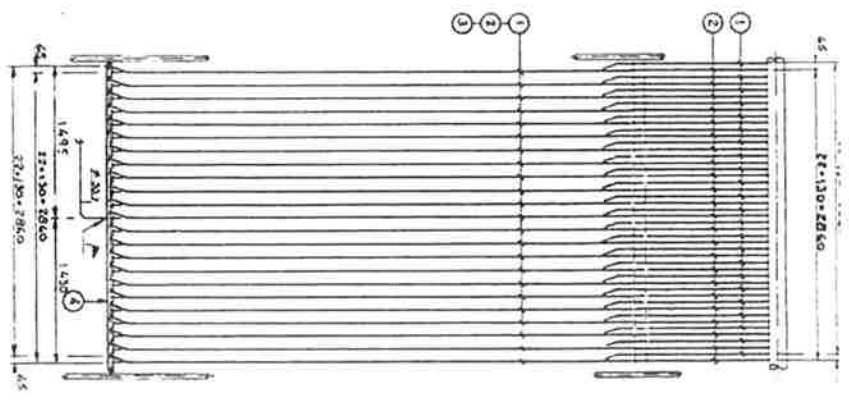
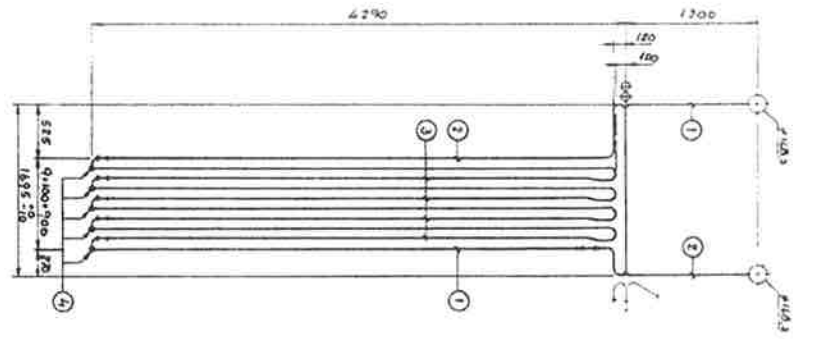
APPROVED



Sl. No.	Particulars	Quantity	Rate	Amount
1	6 1/2"	4	181-887	727554.8
2	3 1/2"	3	101-887	305663.1
3	2 1/2"	2	101-887	203775.4
4	1 1/2"	1	181-887	181887.0
<b>COMPONENTS ENGINEERING AND</b> The works of the above firm are hereby approved for the purpose of the contract. Date: 07/07/88 Signature: [Signature] Designation: [Designation]				
4-25 SATYANSHANKAR OVERSTRUCTURE 1				

Sl. No.	Particulars	Quantity	Rate	Amount

Superheater II

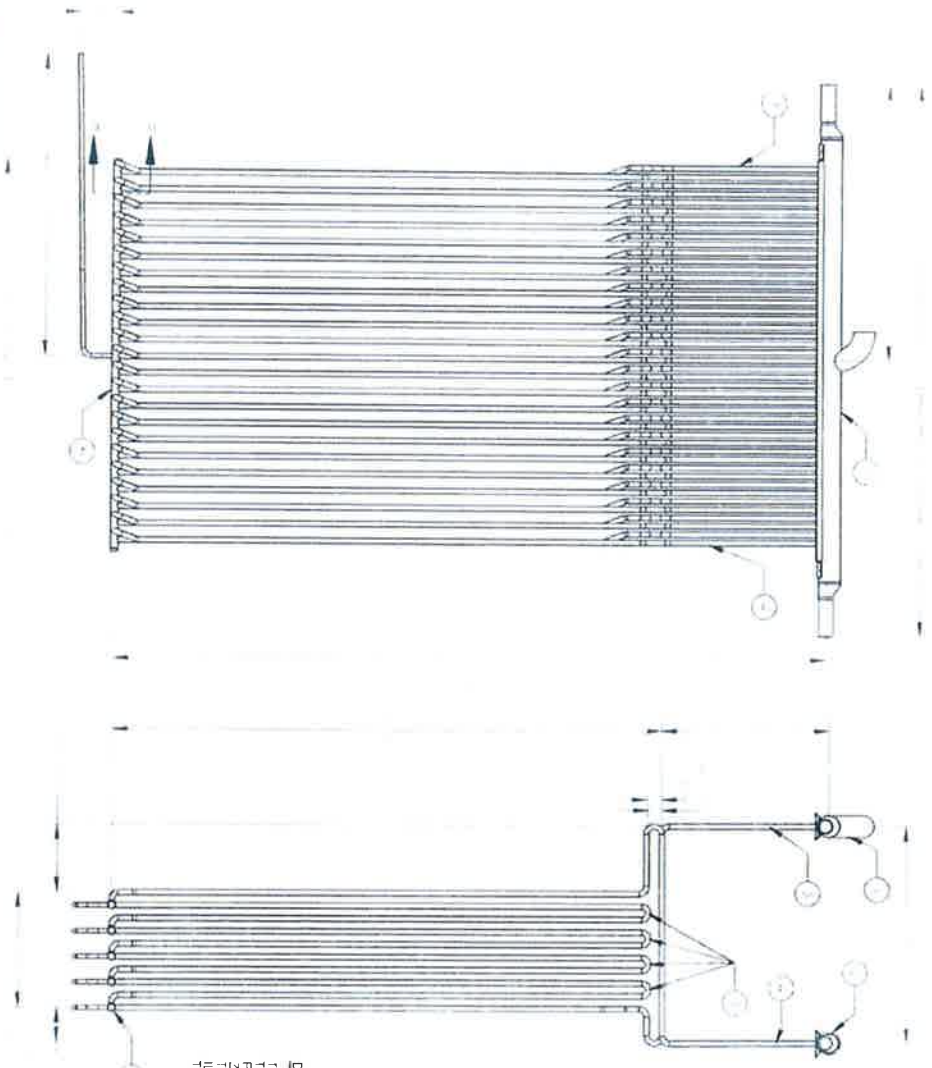


APPROVED

BRITISH ENGINE  
 COMPANIES  
 - 8 JUL 1958  
 INSURANCE LTD.

Sl. No.	Description	Quantity	Unit	Value
1	1311-806	1		1311.806
2	1311-806	2		2623.612
3	1311-806	1		1311.806
4	1311-806	1		1311.806
5	1311-806	1		1311.806
6	1311-806	1		1311.806
7	1311-806	1		1311.806
8	1311-806	1		1311.806
9	1311-806	1		1311.806
10	1311-806	1		1311.806
11	1311-806	1		1311.806
12	1311-806	1		1311.806
13	1311-806	1		1311.806
14	1311-806	1		1311.806
15	1311-806	1		1311.806
16	1311-806	1		1311.806
17	1311-806	1		1311.806
18	1311-806	1		1311.806
19	1311-806	1		1311.806
20	1311-806	1		1311.806
21	1311-806	1		1311.806
22	1311-806	1		1311.806
23	1311-806	1		1311.806
24	1311-806	1		1311.806
25	1311-806	1		1311.806
26	1311-806	1		1311.806
27	1311-806	1		1311.806
28	1311-806	1		1311.806
29	1311-806	1		1311.806
30	1311-806	1		1311.806
31	1311-806	1		1311.806
32	1311-806	1		1311.806
33	1311-806	1		1311.806
34	1311-806	1		1311.806
35	1311-806	1		1311.806
36	1311-806	1		1311.806
37	1311-806	1		1311.806
38	1311-806	1		1311.806
39	1311-806	1		1311.806
40	1311-806	1		1311.806
41	1311-806	1		1311.806
42	1311-806	1		1311.806
43	1311-806	1		1311.806
44	1311-806	1		1311.806
45	1311-806	1		1311.806
46	1311-806	1		1311.806
47	1311-806	1		1311.806
48	1311-806	1		1311.806
49	1311-806	1		1311.806
50	1311-806	1		1311.806
51	1311-806	1		1311.806
52	1311-806	1		1311.806
53	1311-806	1		1311.806
54	1311-806	1		1311.806
55	1311-806	1		1311.806
56	1311-806	1		1311.806
57	1311-806	1		1311.806
58	1311-806	1		1311.806
59	1311-806	1		1311.806
60	1311-806	1		1311.806
61	1311-806	1		1311.806
62	1311-806	1		1311.806
63	1311-806	1		1311.806
64	1311-806	1		1311.806
65	1311-806	1		1311.806
66	1311-806	1		1311.806
67	1311-806	1		1311.806
68	1311-806	1		1311.806
69	1311-806	1		1311.806
70	1311-806	1		1311.806
71	1311-806	1		1311.806
72	1311-806	1		1311.806
73	1311-806	1		1311.806
74	1311-806	1		1311.806
75	1311-806	1		1311.806
76	1311-806	1		1311.806
77	1311-806	1		1311.806
78	1311-806	1		1311.806
79	1311-806	1		1311.806
80	1311-806	1		1311.806
81	1311-806	1		1311.806
82	1311-806	1		1311.806
83	1311-806	1		1311.806
84	1311-806	1		1311.806
85	1311-806	1		1311.806
86	1311-806	1		1311.806
87	1311-806	1		1311.806
88	1311-806	1		1311.806
89	1311-806	1		1311.806
90	1311-806	1		1311.806
91	1311-806	1		1311.806
92	1311-806	1		1311.806
93	1311-806	1		1311.806
94	1311-806	1		1311.806
95	1311-806	1		1311.806
96	1311-806	1		1311.806
97	1311-806	1		1311.806
98	1311-806	1		1311.806
99	1311-806	1		1311.806
100	1311-806	1		1311.806

1/25  
 SATHANADALAM, OVERSEAS II

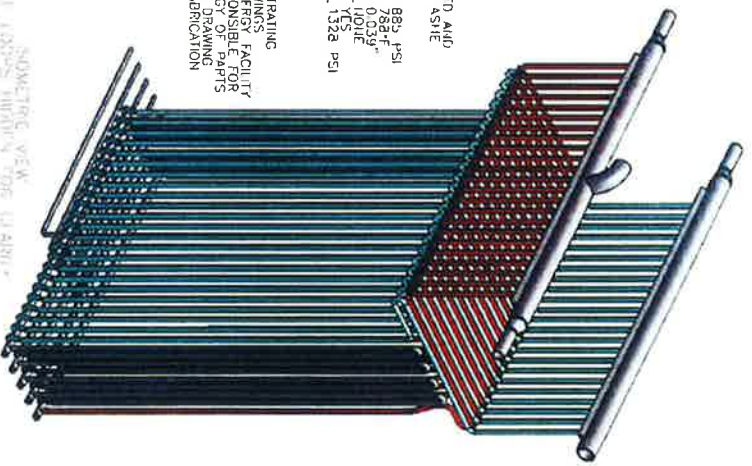


SECTION B-B  
SCALE 1/4" = 1'-0"  
INDICATED DIMENSIONS  
SHOULD BE TO CENTER  
UNLESS NOTED OTHERWISE

VESSEL TO BE DESIGNED, FABRICATED AND STAMPED IN ACCORDANCE WITH THE ASME CODE SECTION I, 2007 EDITION

DESIGN PRESSURE 98.9 PSI  
DESIGN TEMPERATURE 482 F  
CORROSION ALLOWANCE 0.039"  
RADIOGRAPH / NOISE  
POST WELD HEAT TREATMENT YES  
HYDROTEST PRESSURE 132.8 PSI

DISCLAIMER  
THIS DRAWING WAS CREATED FOR ILLUSTRATING THE CONTENT BASED ON EXISTING DRAWINGS PROVIDED BY TYLER BAY WASTE-TO-ENERGY FACILITY ZACHRY T&E CANADA INC. IS NOT RESPONSIBLE FOR THE ENGINEERING DESIGN OR MATERIALS OF PARTS LISTED HEREIN. THE DESIGNER'S INTENT WITH THIS DRAWING IS NOT INTENDED FOR FABRICATION



NO.	DESCRIPTION	QTY	UNIT
1	LUBING M4S 1/2 (INLET)	1	PC
2	LUBING M4S 1/4 (INLET)	1	PC
3	LUBING M4S 1/2 (OUTLET)	1	PC
4	LUBING M4S 1/4 (OUTLET)	1	PC
5	OVER HEADER ASSEMBLY	1	PC



DATE: 05/01/2018  
DRAWN BY: [Name]  
CHECKED BY: [Name]  
APPROVED BY: [Name]

PROJECT: [Name]  
SHEET: [Number]

**ZACHRY T & E CANADA INC.**  
200-7500 SHEPPARD AVENUE EAST  
SUITE 1000  
SCARBOROUGH, ONTARIO M1S 4T8  
CANADA  
TEL: (416) 291-1111  
WWW.ZACHRYTANDCANADA.COM

Watermans Frakturall

# GENERATOR AB

CHARGE-FÖRTECKN  
CAST-LIST

BESTÄLLARE/PURCHASER: **BERMUDØ**

ORDER NR/ORDER NO:

1479

BLAD NR/PAGE

ARTIKEL/ARTICLE: **FRONTVÄGG**

TILLV.NR/MANUFACTURING NO: **3567**

BENÄMNING/DESCRIPTION	DIMENSION/DIMENSION	KVALITET QUALITY	ANTAL QUANTITY	CERTIFIKAT/CERTIFICATE		CHARGENUMMER/ CHARGE NUMBER
				UTFÅRRE/ISSUER	DATA/DATE	
324-4084:1 Fenivåg <small>424-1100 : 9 K&amp;S</small>	60.3 x 5 x 28	35.8. III	825M	BEUTELEK	820916	1418 519112
	108 60.3 x 5 x 596	1330-16	2 ST	WIRSBØ	800230	20802 21-634
324-3520:1.2 108	60.3 x 5	1330-16	6 M	WIRSBØ	820901	1418 28-396
324-4064:1 108	60.3 x 5	1330-16	3 M	WIRSBØ	820901	1418 28-396
324-4064:1 108	60.3 x 5.6 90°	35.8. III	6 ST	ERUE	880215	32052 141239
324-4103:1.2 108	60.3 x 5	1330-16	1.2 M	WIRSBØ	820901	1418 28-396
324-4104:1 108	60.3 x 5	1330-16	4 M	WIRSBØ	820901	1418 28-396

Härmed intygas att ovanstående certifikat överensstämmer med angiven materialkvalitet och ovanstående order:

This is to certify that the above list of certificates is in accordance with stated material qualities and order.

Kontrollavd./Företag  Datum

4 0216





Watermark Left Side watermark Rear

# GENERATOR AB

CHARGE-FORTECKNING  
CAST-LIST

BESTÄLLARE/PURCHASER:

ORDER NR/ORDER NO:

1479

BLAD NR/PAGE NO:

ARTIKEL/ARTICLE: BRÄKE sidovåg, västare o. höger

TILLV. NR/MANUFACTURING NO: 3567

BENÄMNING/DESCRIPTION	DIMENSION/DIMENSION	KVALITET QUALITY	ANTAL QUANTITY	CERTIFIKAT/CERTIFICATE		CHARGENUMMER/HEA
				UTFÄRDARE/ISSUER	DATUM/DATE	
324-Y081:1-5 TUB	60,3 x 5	1330-16	525 M	WIRSB0	820901	1479 78-3965, 78
324-Y083:1-4 TUB	60,3 x 5	1330-16	525 M	WIRSB0	820901	1479 78-3965, 78
324-Y082:83 TUB	60,3 x 5	1330-16	1,3 M	WIRSB0	830328	29769 67386
324-Y108:1-2 TUB	60,3 x 5	1330-16	8,5 M	WIRSB0	820901	1479 78-3965
324-Y105:1-2 TUB	60,3 x 5	1330-16	15 M	WIRSB0	820901	1478 78-3965
324-Y105:1-2 TUB	60,3 x 5	1330-16	18 M	WIRSB0	820901	1478 78-3965

Härmed intygas att ovanstående certifikat överensstämmer med angiven materialkvalitet och ovanstående order:

*[Signature]*

22/11/16

This is to certify that the above list of certificates is in

Kontrollavd./Förnetag

Datum

4 0204



Water van Left Sidewall

# GENERATOR AB

CHARGE-FÖRTECKNING  
CAST-LIST

BESTÄLLARE/PURCHASER: **BERMUDØ** ORDER NR./ORDER NO: **1429** BLAD NR./PAGE NO

ARTIKEL/ARTICLE: **FRÄMRE SIDOVÄGG, VÄNSTRER** TILLV. NR./MANUFACTURING NO: **3567**

BENÄMNING/DESCRIPTION	DIMENSION/DIMENSION	KVALITET QUALITY	ANTAL QUANTITY	UTFÄRDARE/ISSUER	CERTIFIKAT/CERTIFICATE		CHARGE/NUMMER/HE
					DATUM/DATE	NUMMER/NUMBER	
324-4081-1.12 FENJUG	60.3x5x78	35.8-III	1800 M	BEUTELER	820916	1418	519112
" : 21 TUG	60.3x5	1330-16	7 M	WIRRSBO	820901	1418	78-3965
" : 22.33 "	60.3x5	1330-16	2 M	WIRRSBO	830328	29269	62386
" : 26 KEÖK	60.3x5.6 90°	35.8-III	1 ST	ERNE	880215	32052	141839
" : 28 TUG	60.3x6.3	35.8-III	0.5 M	BEUTELER	821006	36895	510109
" : 38 FENJUG	60.3x5x78	35.8-III	6 M	BEUTELER	820916	1418	519112
324-3520-1.2 TUG	60.3x5	1330-16	1.5 M	WIRRSBO	820901	1418	78-3965
324-4103-1.2 TUG	60.3x5	1330-16	1.25 M	WIRRSBO	820901	1418	78-3965
324-4110-1 TUG	60.3x6.3	35.8-III	0.2 M	BEUTELER	821006	36895	510109
324-4111-1 TUG	60.3x5	1330-16	5 M	WIRRSBO	820901	1418	78-3965

Härmed intygas att ovanstående certifikat överensstämmer med angiven materialkvalitet och ovanstående order: .....

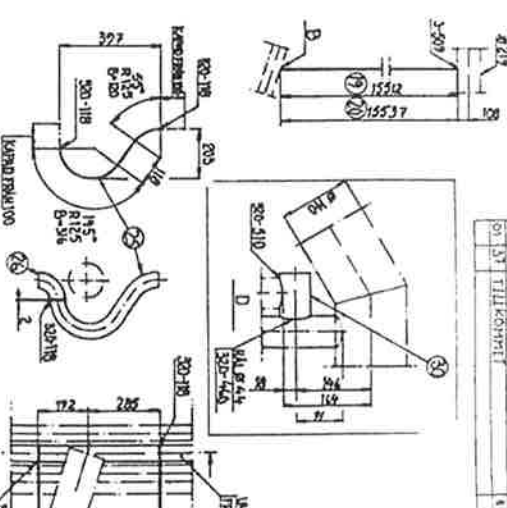
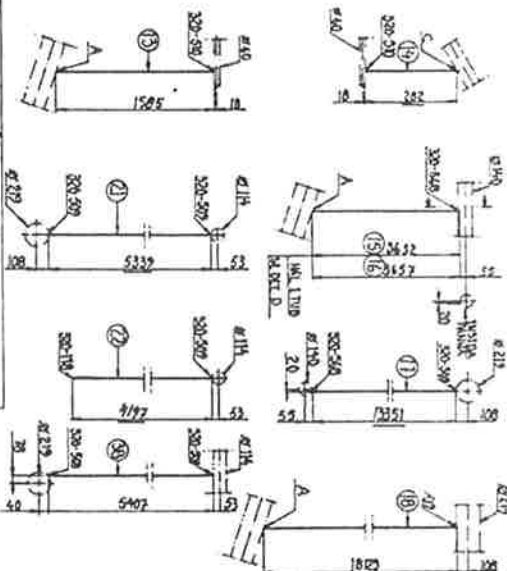
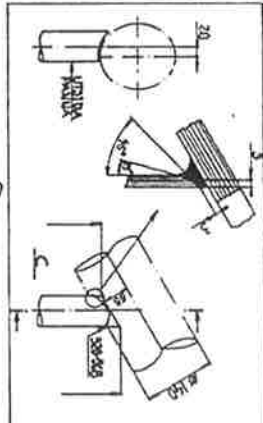
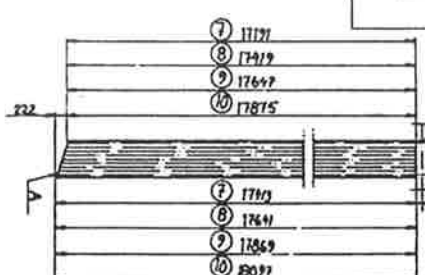
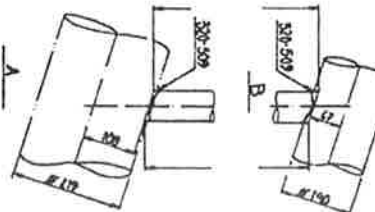
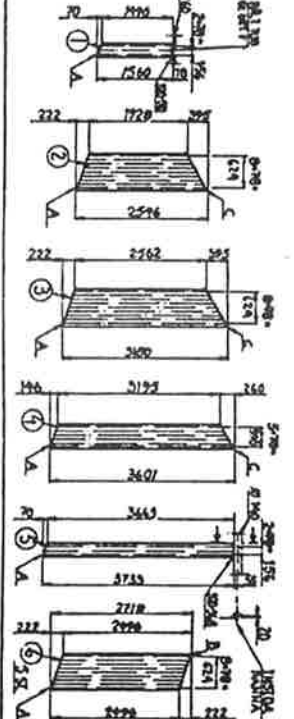
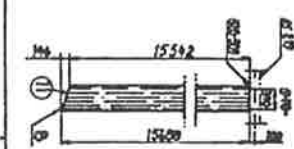
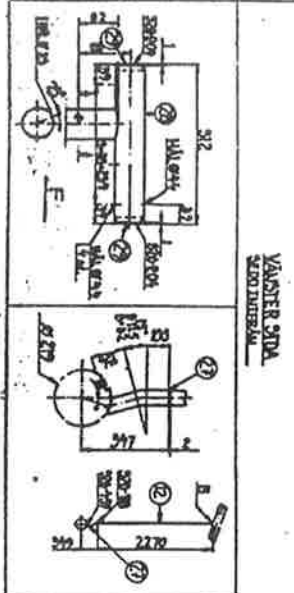
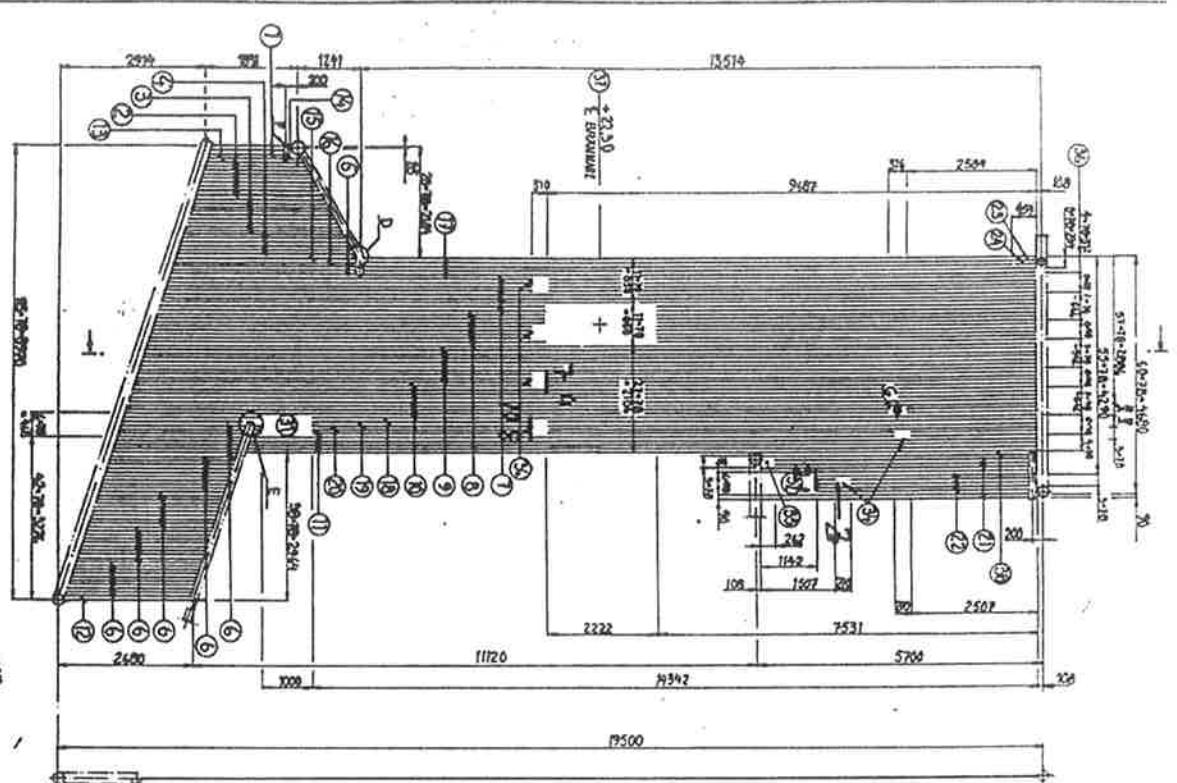
This is to certify that the above list of certificates is in accordance with stated material qualities and order.

Kontrollavd./Förstas Datum

4 0174

Watermark Left Side view

4 0176 1 324-418



NO.	DESCRIPTION	QTY.	UNIT	REMARKS
1	RESERVE TANK	1	PC	1.60
2	RESERVE TANK	1	PC	1.15
3	RESERVE TANK	1	PC	1.15
4	RESERVE TANK	1	PC	1.15
5	RESERVE TANK	1	PC	1.15
6	RESERVE TANK	1	PC	1.15
7	RESERVE TANK	1	PC	1.15
8	RESERVE TANK	1	PC	1.15
9	RESERVE TANK	1	PC	1.15
10	RESERVE TANK	1	PC	1.15
11	RESERVE TANK	1	PC	1.15
12	RESERVE TANK	1	PC	1.15
13	RESERVE TANK	1	PC	1.15
14	RESERVE TANK	1	PC	1.15
15	RESERVE TANK	1	PC	1.15
16	RESERVE TANK	1	PC	1.15
17	RESERVE TANK	1	PC	1.15
18	RESERVE TANK	1	PC	1.15
19	RESERVE TANK	1	PC	1.15
20	RESERVE TANK	1	PC	1.15
21	RESERVE TANK	1	PC	1.15
22	RESERVE TANK	1	PC	1.15
23	RESERVE TANK	1	PC	1.15
24	RESERVE TANK	1	PC	1.15
25	RESERVE TANK	1	PC	1.15
26	RESERVE TANK	1	PC	1.15
27	RESERVE TANK	1	PC	1.15
28	RESERVE TANK	1	PC	1.15
29	RESERVE TANK	1	PC	1.15
30	RESERVE TANK	1	PC	1.15

BRITISH ENGINE  
 APPROVE  
 8 JUL 1988  
 IN PRESENCE OF  
 1988

FRANK STORAGE WATER  
 FILMPLAN

Waterman Pearl Ball

# GENERATOR AB

CHARGE-FÖRTECKN.  
CAST-LIST

BESTÄLLARE/PURCHASER: **BERMUDA**

ORDER NR./ORDER NO:

1429

BLAD NR./PAGE N

ARTIKEL/ARTICLE: **BRÄVÄGG, ELDSTÅ**

TILLV. NR./MANUFACTURING NO:

3562

BENÄMNING/DESCRIPTION	DIMENSION/DIMENSION	KVALITET QUALITY	ANTAL QUANTITY	CERTIFIKAT/CERTIFICATE		CHARGENUMMER/H	
				UFGÅRARE/ISSUER	DATUM/DATE		NUMMER/NUMBER
324-408: 1.5 TUBER	60.3 x 5 x 78	35.8-TII	720 M	BEUTELEER	820916	1418	519112
324-408: 1.5 TUB	60.3 x 5	1330-16	2.5 M	WIRRSBO	820901	1418	78-396
324-3570: 1-2 TUB	60.3 x 5	1330-16	1.5 M	WIRRSBO	820901	1418	78-396
324-3578: 1 TUB	60.3 x 5	1330-16 35.8-TII	6 M	WIRRSBO TUV	820901 880344	1418 22	78-396 4002
324-4103: 1/2 TUB	60.3 x 5	1330-16	1.5 M	WIRRSBO	820901	1418	78-396
324-4108: 1-6 TUB	60.3 x 5	1330-16	38 M	WIRRSBO	880211	32056	78-406

Härmed intygas att ovanstående certifikat överensstämmer med angiven materialkvalitet och ovanstående order: .....

This is to certify that the above list of certificates is in accordance with stated material qualities and order: .....

Kontrollivd./Företag

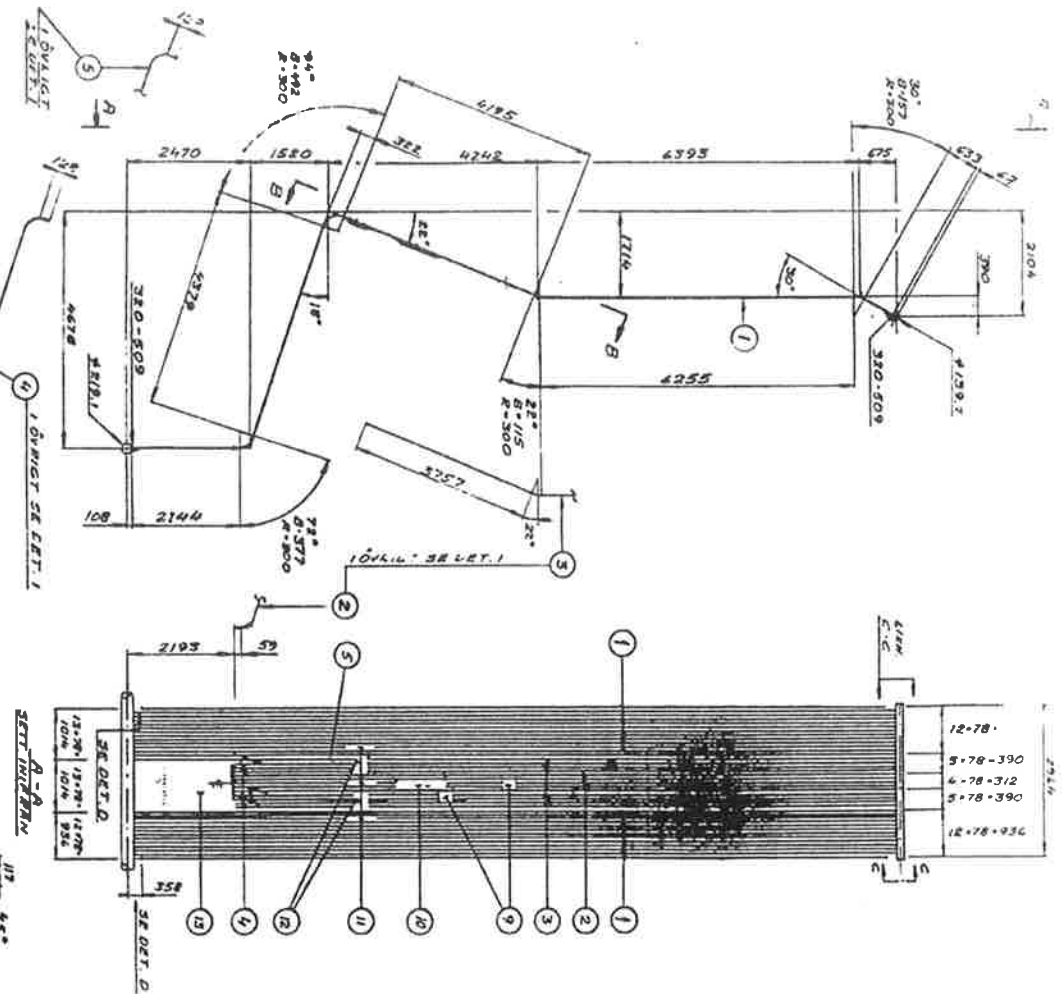
Datum

4 0224

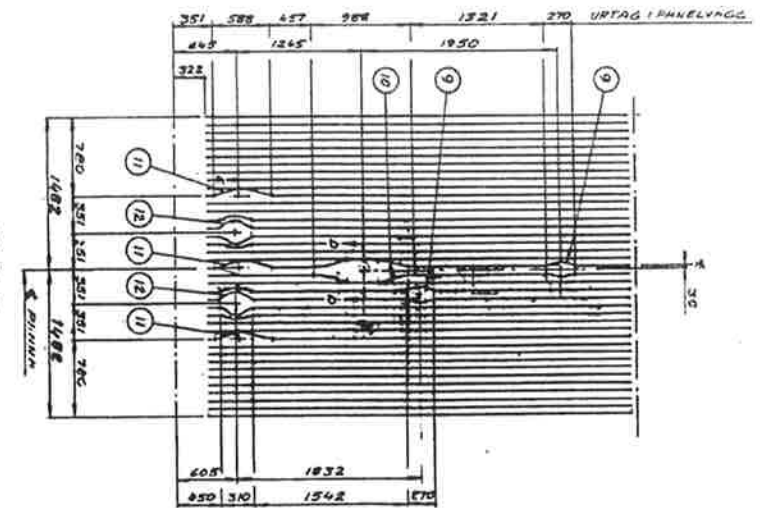
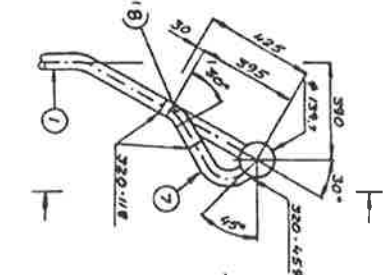
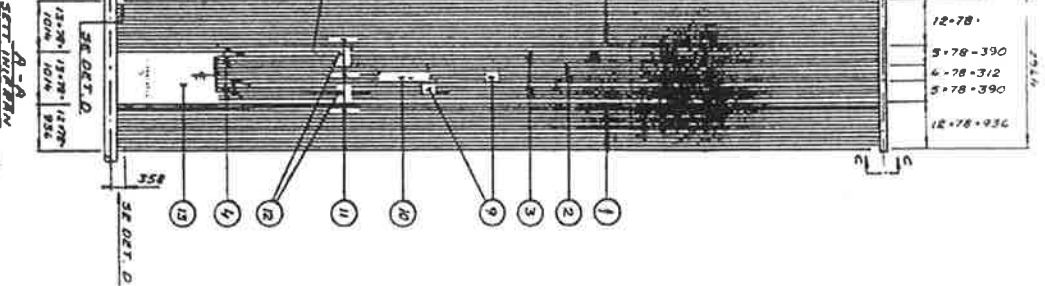
Watermark: Watermark Rear with

4 0225

1 324-408



DETAIL D 115



BRITISH ENGINE  
 APPROVED  
 8 JUL 1988  
 COMPARTMENT

Timplen  
 Le 3567.

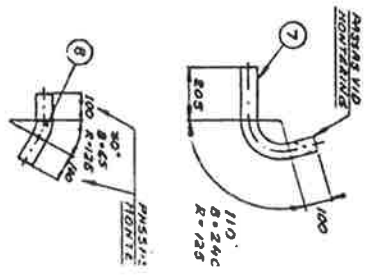
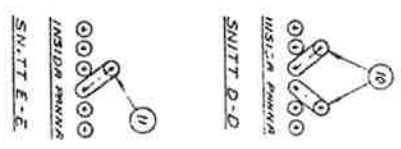
SMITTLIG ROVSTAD  
 (7461-1874) 7468 KGS  
 SMITTLIGRO VOLVM  
 7.77 M<sup>3</sup>

SMITTLIG RUNDSTÄNKEN ENIGT 52

№	Benämning	Material	Mått	Antal	Volym
1	GALE	130-1300	130-1300	1	1.12
2	REKONSTRUKTION	130-1300	130-1300	1	1.12
3	UNDANNTAG	130-1300	130-1300	1	1.12
4	REKONSTRUKTION	130-1300	130-1300	1	1.12
5	UNDANNTAG	130-1300	130-1300	1	1.12
6	REKONSTRUKTION	130-1300	130-1300	1	1.12
7	UNDANNTAG	130-1300	130-1300	1	1.12
8	REKONSTRUKTION	130-1300	130-1300	1	1.12
9	UNDANNTAG	130-1300	130-1300	1	1.12
10	REKONSTRUKTION	130-1300	130-1300	1	1.12
11	UNDANNTAG	130-1300	130-1300	1	1.12
12	REKONSTRUKTION	130-1300	130-1300	1	1.12
13	UNDANNTAG	130-1300	130-1300	1	1.12
14	REKONSTRUKTION	130-1300	130-1300	1	1.12
15	UNDANNTAG	130-1300	130-1300	1	1.12

SMITTLIGRO VOLVM 7.77 M<sup>3</sup>

BAKVRIGG ELDSTAD



Waterwall Right Side wall (Rear)

# GENERATOR AB

CHARGE-FÖRTECKNING  
CAST-LIST

BESTÄLLARE/PURCHASER: ORDER NR./ORDER NO: 1479 BLAD NR./PAGE NO:

ARTIKEL/ARTICLE: BAKRE SIDOVÄGG, VÄNSTER O. HÖGER TILLV. NR./MANUFACTURING NO: 3567

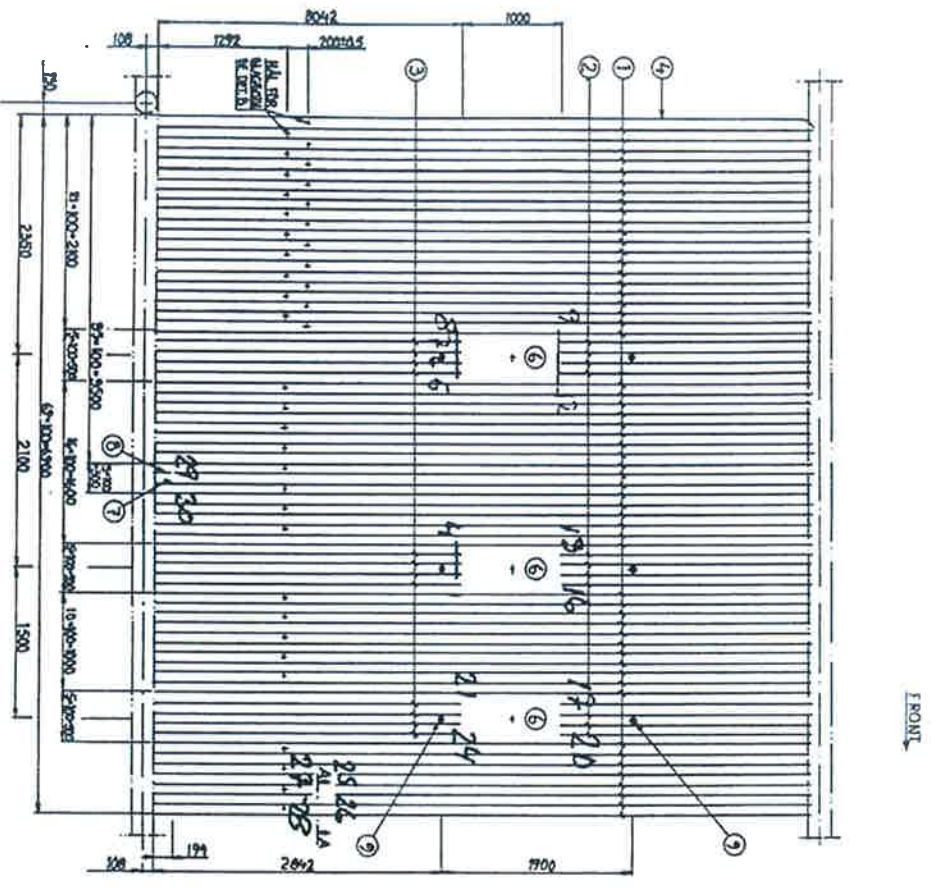
BENÄMNING/DESCRIPTION	DIMENSION/DIMENSION	KVALITET QUALITY	ANTAL QUANTITY	CERTIFIKAT/CERTIFICATE		CHARGENUMMER/HE
				UTFÄRDARE/ISSUER	DATUM/DATE	
324-Y082:1-5 TUB	60,3 x 5	1330-16	525 M	WIRSSBO	870901	1479 78-3965, 78
324-Y083:1-4 TUB	60,3 x 5	1330-16	525 M	WIRSSBO	870901	1479 78-3965, 78
324-Y082-83 TUB	60,3 x 5	1330-16	1,3 M	WIRSSBO	830328	29269 62386
324-Y108:1-2 TUB	60,3 x 5	1330-16	8,5 M	WIRSSBO	870901	1479 78-3965
324-Y108:1-2 TUB	60,3 x 5	1330-16	15 M	WIRSSBO	870901	1418 78-3965
324-Y108:1-2 TUB	60,3 x 5	1330-16	18 M	WIRSSBO	870901	1418 78-3965

Härmed intygas att ovanstående certifikat överensstämmer med angiven materialkvalite och ovanstående order:.....  
 This is to certify that the above list of certificates is accordance with stated material qualities and order.....  
 Kontrollavd./Företag: *[Signature]* Datum: 28/11/15

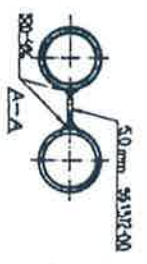
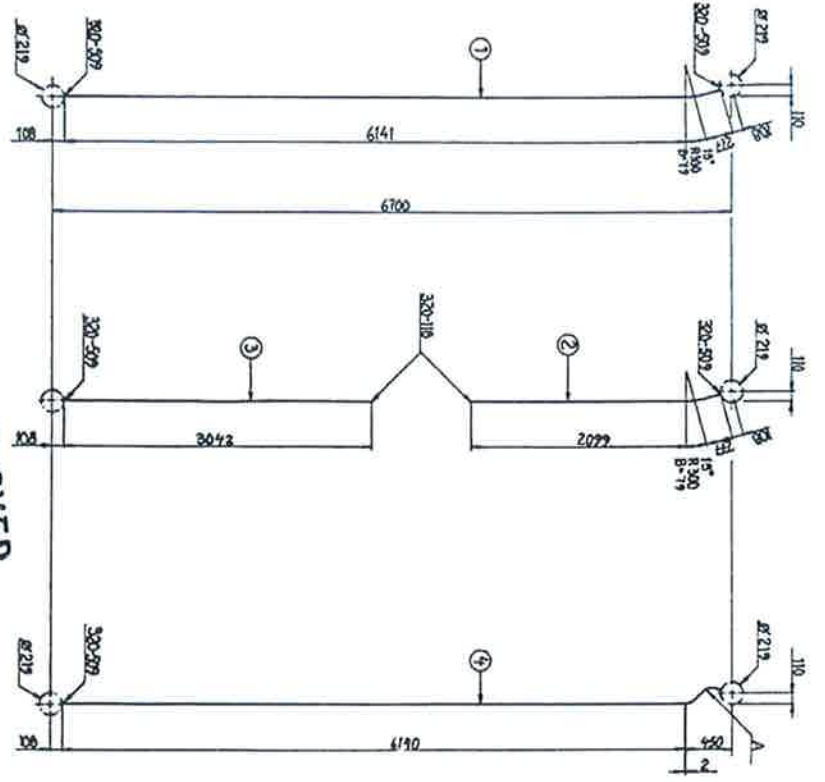
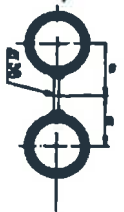
4 0185



Water wall Right Side view (Rear)



**DET B**  
 ALYKANTING FOR ANVÄNDNING I VÄGGER I RÖKUGNEN 5000 RÖKSTÄM  
 52 MM Ø 200 PÅ 3 TITANERNS MITT  
 RÖKSTÄM OCH RÖKSTÄM OCH RÖKSTÄM  
 MITT RÖKSTÄM 5000 RÖKSTÄM 5000 RÖKSTÄM 5000 RÖKSTÄM



**APPROVED**  
 COO M. J. ANDERSON  
 - 8 JUL 1988  
 BRITISH ENGINE INSURANCE LTD.

*TIMORAN*

NO	REVISION	DESCRIPTION	DATE
1		REVISION	
2		REVISION	
3		REVISION	
4		REVISION	
5		REVISION	
6		REVISION	
7		REVISION	
8		REVISION	
9		REVISION	
10		REVISION	
11		REVISION	
12		REVISION	
13		REVISION	
14		REVISION	
15		REVISION	
16		REVISION	
17		REVISION	
18		REVISION	
19		REVISION	
20		REVISION	
21		REVISION	
22		REVISION	
23		REVISION	
24		REVISION	
25		REVISION	
26		REVISION	
27		REVISION	
28		REVISION	
29		REVISION	
30		REVISION	
31		REVISION	
32		REVISION	
33		REVISION	
34		REVISION	
35		REVISION	
36		REVISION	
37		REVISION	
38		REVISION	
39		REVISION	
40		REVISION	
41		REVISION	
42		REVISION	
43		REVISION	
44		REVISION	
45		REVISION	
46		REVISION	
47		REVISION	
48		REVISION	
49		REVISION	
50		REVISION	
51		REVISION	
52		REVISION	
53		REVISION	
54		REVISION	
55		REVISION	
56		REVISION	
57		REVISION	
58		REVISION	
59		REVISION	
60		REVISION	
61		REVISION	
62		REVISION	
63		REVISION	
64		REVISION	
65		REVISION	
66		REVISION	
67		REVISION	
68		REVISION	
69		REVISION	
70		REVISION	
71		REVISION	
72		REVISION	
73		REVISION	
74		REVISION	
75		REVISION	
76		REVISION	
77		REVISION	
78		REVISION	
79		REVISION	
80		REVISION	
81		REVISION	
82		REVISION	
83		REVISION	
84		REVISION	
85		REVISION	
86		REVISION	
87		REVISION	
88		REVISION	
89		REVISION	
90		REVISION	
91		REVISION	
92		REVISION	
93		REVISION	
94		REVISION	
95		REVISION	
96		REVISION	
97		REVISION	
98		REVISION	
99		REVISION	
100		REVISION	

4 0186

Watermark Right Side mark

# GENERATOR AB

CHARGE-FÖRTECKNING  
CAST-LIST

BESTÄLLARE/PURCHASER: **BEEMUDØ** ORDER NR./ORDER NO: **1429** BLAD NR/PAGE NO: **1/5**

ARTIKEL/ARTICLE: **FÄRRE SIOVÄGG, HÖGER** TILLV. NR/MANUFACTURING NO: **3567**

BENÄMNING/DESCRIPTION	DIMENSION/DIMENSION	KVALITET QUALITY	ANTAL QUANTITY	CERTIFIKAT/CERTIFICATE		CHARGENUMMER/HEAT NO:	
				UTFÄRDARE/ISSUER	DATUM/DATE		
24-Y080:1-28 FENSTUR	60.3 x 5 x 78	35.8-III	1800M	BENTELE R	820916	1418	519112
21 TOR	60.3 x 5	1330-16	7M	WIRSBØ	820901	1418	78-3965
25 2732 *	60.3 x 5	1330-16	2M	WIRSBØ	830328	29269	62386
26 Krok	60.3 x 5,6 90°	35.8-III	1ST	FRUE	880215	32052	141239
28 TOR	60.3 x 6,3	35.8-III	0,2M	BENTELE R	821006 821201	36895 1418	510109 519580
38 FENSTUR	60.3 x 5 x 78	35.8-III	6 M.	BENTELE R	820916	1418	519112
34-Y-3520:1-2 TOR	60,3 x 5	1330-16	12 M.	WIRSBØ	820901	1418	78-3965
24-Y-1103:1-2 TOR	60.3 x 5	1330-16	12,5 M.	WIRSBØ	820901	1418	78 3965
24-Y-110:1 TOR	60.3 x 6,3	35.8-III	0,2M	BENTELE R	821006	36895	510109
24-Y-111:1-2 TOR	60.3 x 5	1330-16	5 M	WIRSBØ	820901	1418	78-3965

Härmed intygas att ovanstående certifikat överensstämmer med angiven materialkvalitet och ovanstående order: .....

Kontrollavd./Företag 

Datum

This is to certify that the above list of certificates is in accordance with stated material qualities and order.

4 0162

